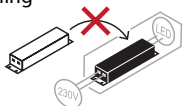
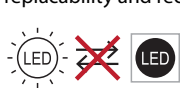


LED LAMP SPECIFICATIONS:	4W	8W	10W	14W
Luminaire lumens (with diffuser)	<b>460 lm</b>	<b>920 lm</b>	<b>1150 lm</b>	<b>1610 lm</b>
Lumens from chip (no diffuser)	<b>480 lm</b>	<b>960 lm</b>	<b>1200 lm</b>	<b>1680 lm</b>
Useful lumens	<b>440 lm</b>	<b>880 lm</b>	<b>1100 lm</b>	<b>1540 lm</b>
Rated Wattage	4W	8W	10W	14W
Rated luminous flux	440 lm	880 lm	1100 lm	1540 lm
Nominal life time of the lamp	30,000 hrs	30,000 hrs	30,000 hrs	30,000 hrs
Colour temperature	4000K	4000K	4000K	4000K
Number of switching cycles before premature lamp failure	15,000	15,000	15,000	15,000
Warm-up time up to 60% of the full light output	Instant full light	Instant full light	Instant full light	Instant full light
Dimmable	No	No	No	No
Nominal beam angle	120°	120°	120°	120°
Rated power	4W	8W	10W	14W
Rated lamp lifetime	30,000 hrs	30,000 hrs	30,000 hrs	30,000 hrs
Displacement factor	0.84	0.84	0.84	0.88
Lumen maintenance factor at end of nominal life	>0.7	>0.7	>0.7	>0.7
Starting time	<0.1s	<0.1s	<0.1s	<0.1s
Colour rendering	>80	>80	>80	>80
Colour consistency	Within a six step Macadam ellipse	Within a six step Macadam ellipse	Within a six step Macadam ellipse	Within a six step Macadam ellipse
Rated beam angle	120°	120°	120°	120°
Voltage / Frequency	240V~50Hz	240V~50Hz	240V~50Hz	240V~50Hz
This product contains a Light Source of Energy Efficiency Class E				
Not suitable for accent lighting				

See website for more information on  
replacability and recycling



Email: [sales@eterna-lighting.co.uk](mailto:sales@eterna-lighting.co.uk) / [technical@eterna-lighting.co.uk](mailto:technical@eterna-lighting.co.uk)

Visit our website: [www.eterna-lighting.co.uk](http://www.eterna-lighting.co.uk)

Issue 0122

Made in China



# Eterna

*Everyday Lighting For Professionals*

V2

## INSTALLATION INSTRUCTIONS

**A guide for qualified electricians**



- Pack contents:**
- 1 x Linkable LED strip light
  - 1 x 1.8m mains cable
  - 1 x 22cm link lead
  - 2 x "F" clip
  - 2 x "U" clip
  - 2 x Screws
  - 2 x Wall plugs

Model:

**VECOLT54 / VECOLT58**

**VECOLT510 / VECOLT514**

**Economy T5 Linkable LED Strip Lights**

These instructions are provided as a guideline to assist you.

**PLEASE READ THESE INSTRUCTIONS BEFORE INSTALLATION  
AND RETAIN FOR FUTURE REFERENCE**

## READ THIS FIRST:

Check the pack and make sure you have all of the parts listed on the front of this booklet. If not, contact the outlet where you bought this product.

This product must be installed by a competent person in accordance with the current building and IEE wiring regulations.

As the buyer, installer and/or user of this product it is your own responsibility to ensure that this fitting is fit for the purpose for which you have intended it. Eterna Lighting cannot accept any liability for loss, damage or premature failure resulting from inappropriate use.

This product is designed and constructed according to the principles of the appropriate British Standard and is intended for normal domestic service. Using this fitting in any other environments may result in a shortened working life, for example where there is prolonged periods of use or higher than normal ambient temperatures such as lighting public or shared spaces or in nursing/care home facilities.

Switch off the mains before commencing installation and remove the appropriate circuit fuse or lock off MCB.

This light fitting is suitable for indoor use only.

This product is suitable for use in living areas only.

This product is designed for permanent connection to fixed wiring: this must be a suitable circuit (protected with the appropriate MCB or fuse).

This product is suitable for installation on surfaces with normal flammability e.g. wood, plasterboard and masonry. It is not suitable for use on highly flammable surfaces (e.g. polystyrene, textiles).

Before making fixing hole(s), check that there are no obstructions hidden beneath the mounting surface such as pipes or cables.

The chosen location of your new fitting should allow for the product to be securely mounted and safely connected to the mains supply (lighting circuit).

Do not attach to surfaces which are damp, freshly painted or otherwise electrically conductive (e.g. metallic surfaces).

When making connections ensure that the terminals are tightened securely and that no strands of wire protrude. Check that the terminals are tightened onto the bared conductors and not onto any insulation.

This product is double-insulated. **DO NOT CONNECT ANY PART TO EARTH.**

This product is not intended to be used by children and persons with sensory, physical and/or mental impairments that would prevent them from using it safely.

You are advised at every stage of your installation to double-check any electrical connections you have made. After you have completed your installation there are electrical tests that should be carried out, these tests are specified in the current IEE wiring and building regulations.

## LAMP REPLACEMENT:

The light source of this luminaire is not replaceable; when the light source reaches its end of life the whole luminaire shall be replaced.

## EVENTUALLY, YOU MAY WANT TO REPLACE THIS PRODUCT:

Regulations require the recycling of Waste from Electrical and Electronic Equipment (European "WEEE Directive" effective August 2005—UK WEEE Regulations effective 2nd January 2007). Environment Agency Registered Producer: WEE/GA0248QZ.

WHEN YOUR PRODUCT COMES TO THE END OF ITS LIFE OR YOU CHOOSE TO REPLACE IT, PLEASE RECYCLE IT WHERE FACILITIES EXIST - DO NOT DISPOSE WITH HOUSEHOLD WASTE.

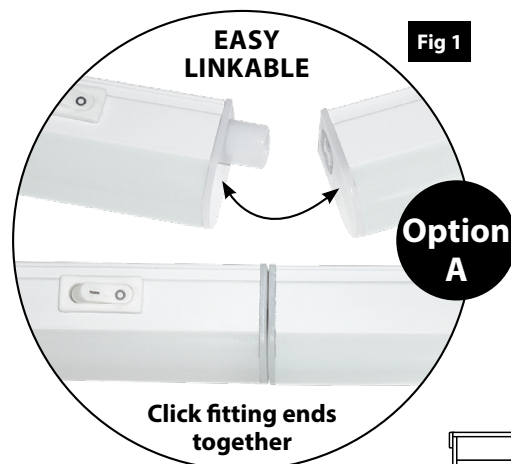
## CLEANING:

Clean this fitting only with a soft dry cloth.

Do not use any chemical or abrasive cleaners.

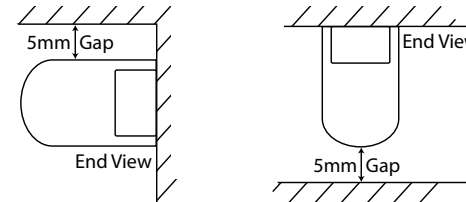
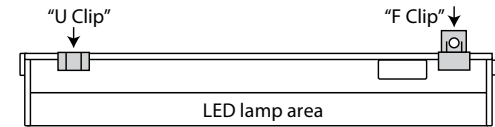
## IF YOU EXPERIENCE PROBLEMS:

If you believe your product is defective, please return it to the place where you bought it. Our Technical Team will gladly advise on any Eterna Lighting product, but may not be able to give specific instructions regarding individual installations.



## INSTALLATION:

01) When positioning the fitting, make sure there is a gap of at least 5mm between the LED lamp area and any adjacent surface. See below:



02) Using the fixing clips, mark off the fixing points on to the surface. If fixing to a shelf or under a cupboard, check the screw size required and screw into place. (See above for clip positions).

03) If fixing directly to the wall, drill holes using a suitable drill bit to a depth of 30mm and insert wall plugs (included).

04) Secure the fixing clips in place using appropriate screws (included).

05) Attach the fitting to the clips.

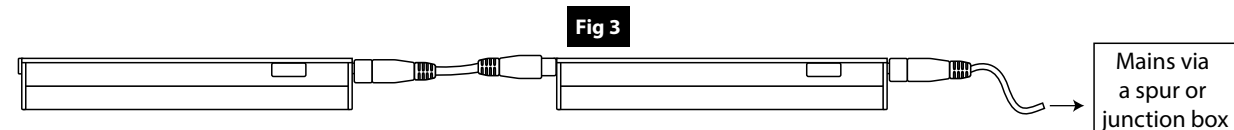
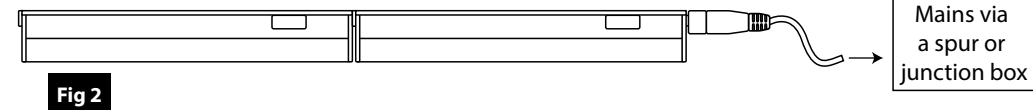
06) Connect the mains lead or link lead to the socket on your fitting.

07) Restore the power supply and switch on.

## HOW TO LINK MULTIPLE FITTINGS TOGETHER: (SEE FIG.1 AND FIG. 2)

The light fittings can be butted together to form a line of up to a maximum of 5 fittings. Simply push the fittings together at the ends.

Use the 1.8m mains lead cable to connect the first fitting and the mains via a spur or junction box (not supplied).



## HOW TO LINK MULTIPLE FITTINGS TOGETHER WITH THE SUPPLIED LINK LEAD: (SEE FIG.3 AND FIG. 4)

Connect the 22cm link lead (supplied) between each fitting and once all lights have been connected, connect the 1.8m mains lead (supplied) to the mains via a spur or junction box (not supplied).

Connect fitting together using the link lead

Fig 4

Option B