

# Installation Instructions

Instrucciones de instalación, Instructions d'installation, Installationsanleitung, إرشادات التركيب,

Installatie-instructies, Instruções de instalação, Installatie-instructies,

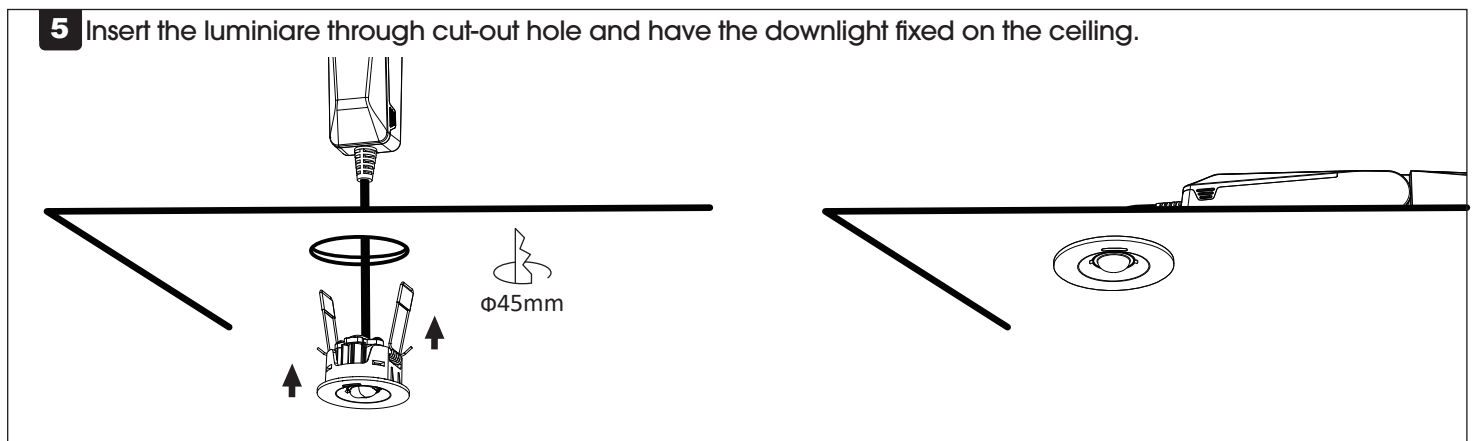
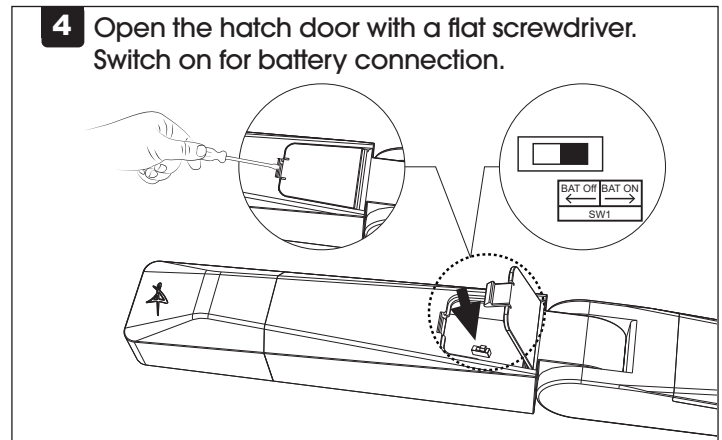
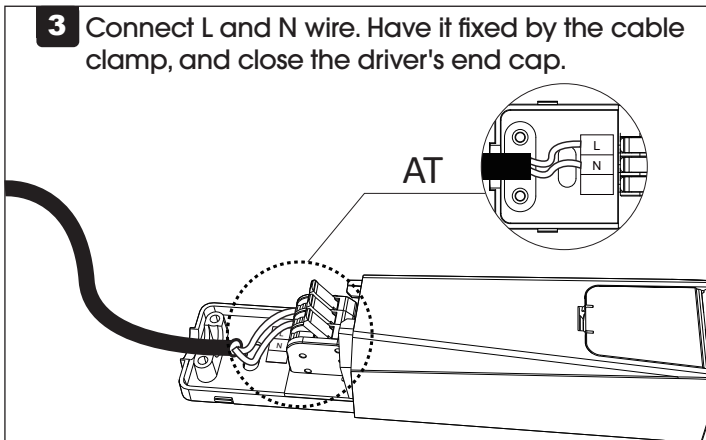
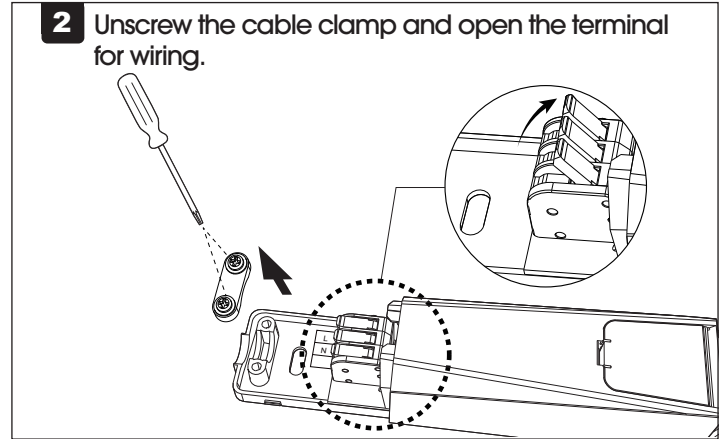
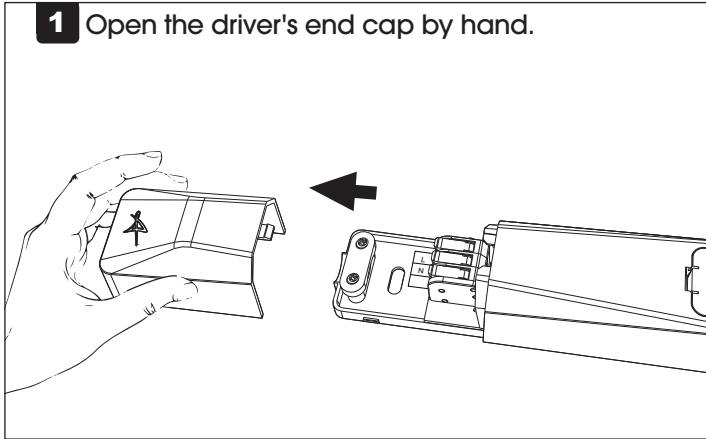
設置手順説明, Οδηγίες εγκατάστασης



Product Code: (ASIP/1/LO/W)  
(ASIP/1/LO/B)  
(ASIP/1/HO/W)  
(ASIP/1/HO/B)



Master  
Translations  
QR Link



Ansell Electrical Products  
Unit 6B, Stonecross Industrial  
Park,  
Yew Tree Way,  
Warrington,  
WA3 3JD

Ansell (Sales & Distribution)  
Unit 2, M2 Business Park,  
Duncrue Street,  
Belfast,  
BT3 9AQ

Ansell (Sales & Distribution) Republic of Ireland Limited  
Unit G1, Block G,  
Calmount Park, Calmount Avenue  
Dublin 12,  
D12 TH56

[www.ansell-lighting.com](http://www.ansell-lighting.com)

Warrington Tel: +44 (0)1942 433333

Belfast Tel: +44 (0)2890 773750

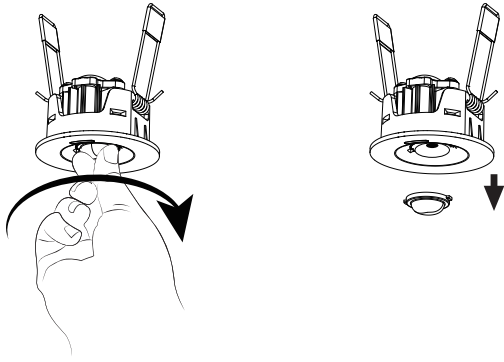
International Tel: +44 (0)1942 433343

Spain Tel: 00 34 938 005642

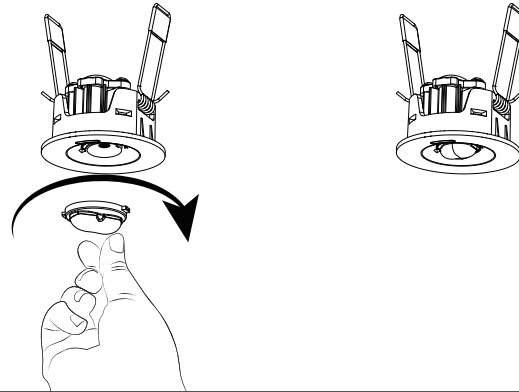
Issue Number: (1)

## Changing the Lens

Rotate the lens to the notch position and then remove it.

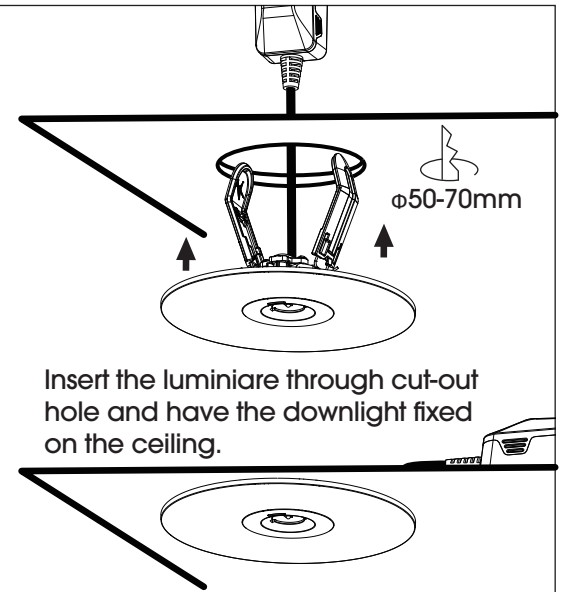
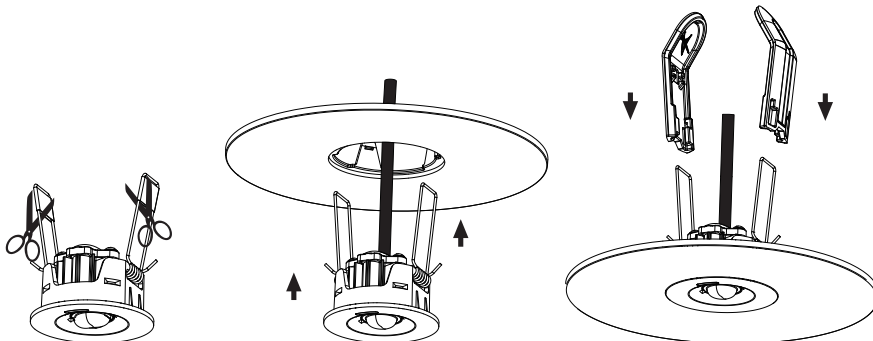


Position the other lens by engaging its protrusion with the notch, then rotate clockwise until secured.



## Changing to wide bezel

Cut away the heat-shrink tubing from the retaining clip, have the luminaire through the wide bezel, position the PC sleeve onto the clip



### 1. Instruction for Automatic test function

Once the unit is powered up, a self-diagnostics test will be automatically initiated:

- Check battery, lamp, charge board and transfer fault all the time.
- Run 3mins duration test every month.
- Run 3H duration test every year.

After the first power on and charging for 20 hours, it will perform a 3H self-discharge.

Note: All test functions are preset and no need field adjustment.

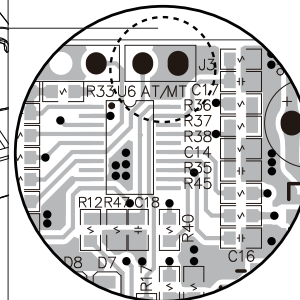
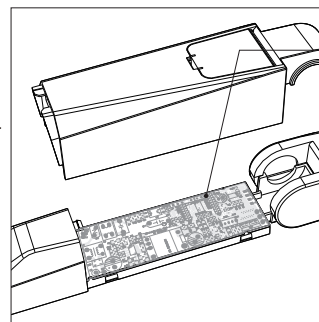
### 2. Dual Colour LED Status Indicator Meaning

- Green indicator solid on: Ready/ Normal Operation
- Red indicator flashes: Require service

•	One flash, 4s pause	Battery disconnected
••	Two flashes, 4s pause	Low battery voltage
•••	Three flashes, 4s pause	Charge board fault
••••	Four flashes, 4s pause	AC/DC transfer fault
•••••	Five flashes, 4s pause	LED lamp fault

Note: When the fault is recovered, press the test button for 2s, the red flashing indicator will turn green. The fault is cleared, and the unit is back to normal.

### 3. Default setting is Auto test. If need Normal emergency mode/ Manual test, please have the jumper sit on two pins.



a. Auto Test mode (default):  
(w/o jumper or jumper on one pin)



b. Normal Emergency mode:  
(Jumper on two pins)



#### Remark:

LiFePO4 battery could not be charged below 0°C or above 60°C according to IEC 60598-2-22.

When the battery temperature is detected below 0°C or above 60°C, the LED indicator will be off and the battery will stop charging.

Ansell Electrical Products  
Unit 6B, Stonecross Industrial  
Park,  
Yew Tree Way,  
Warrington,  
WA3 3JD

Ansell (Sales & Distribution)  
Unit 2, M2 Business Park,  
Duncrue Street,  
Belfast,  
BT3 9AQ

Ansell (Sales & Distribution) Republic of Ireland Limited  
Unit G1, Block G,  
Calmount Park, Calmount Avenue  
Dublin 12,  
D12 TH56

[www.ansell-lighting.com](http://www.ansell-lighting.com)