



Description – Camini 3W LED IP65 Recessed Wall Light

Installation Instructions

Luminaire Code(s) – **ACSQLEDWL**



General Installation Instructions

These instructions should be read carefully prior to any installation and retained after completion for further reference and maintenance. Please give these instructions to the building owner/occupier after installation.

Important Safety

1. Before installation, maintenance or lamp replacement, ensure that the mains supply to the luminaire is switched off and the circuit supply fuses are removed or the circuit breaker is turned off.
2. It is recommended that only a qualified electrical contractor carries out the installation of this luminaire and that the luminaire is installed in compliance with the current edition of the IEE Wiring Regulations.
3. The person carrying out the installation is to check and verify that the total load on the circuit, including that of this luminaire does not exceed the rating of the circuit cable, fuse or circuit breaker.
4. Where a luminaire incorporates discharge control gear (inductive load), the circuit capacity and ratings require careful sizing to avoid nuisance tripping of the protective device used in the installation.
5. Where applicable, careful consideration should be taken during installation to ensure that all fixings and/or suspensions are of a suitable size for the luminaire being installed.

Ratings

1. All luminaires are manufactured & tested in compliance with the requirement contained within BS EN 60598 and are CE marked.
2. All luminaires that are of Class 1 construction and that are marked accordingly, MUST be earthed.
3. All luminaires are designed to operate at 230Volts AC -6%/+10% = 216Volts to 252Volts. Do not operate outside these voltages.
4. All luminaires are only suitable for applications within their rated Ingress Protection limits as stated.

Exclusions to Warranty

Please Note - The limited warranty shall be null and void in the following circumstances:-

Failure by the installer, end user or any third party to exercise caution to protect any covered product or part from outside damage, adverse temperature (normal operating ambient temperature 0 - 25°C), humidity conditions, fluctuations in the electrical system or physical abuse as well as failure related to workmanship in the installation of the products or parts.

Installation

Concrete Installation – PVC Installation Sleeve Required

- Separate the luminaire from the PVC sleeve. See Fig-1-A1
- Remove desired cable entry points on PVC sleeve. See Fig-1-A2.
- Cut off the tip of the cable gland on the luminaire to install incoming supply cable. See Fig-1-A3.
- Install the PVC sleeve into a cut out of - ACSQLEDWL - Width 100mm x Length 100mm x Depth 120mm, then feed the supply cable through the PVC sleeve ready to connect the to the luminaire. See Fig-1-A4
- Allow the concrete to set. Do not install the fixture into wet concrete.
- Sufficient cable is to be left during installation to allow the luminaire to be removed from the PVC sleeve for any future maintenance that may be required.
- Connect the fixture into the relevant terminations. See Fig-1-A5.
- Connect the incoming mains cable to the luminaire.

• Connect as follows:	LIVE	(L)	BROWN OR RED
	NEUTRAL	(N)	BLUE OR BLACK
	EARTH		GREEN / YELLOW

- It is the installer's responsibility to provide adequate electrical connections to maintain the correct IP rating for the installed environment. This is in accordance to BS EN 7671.
- Fix the luminaire onto the PVC tub. See Fig-1-A6.
- Ensure that there are no exposed conductors and when installing the fixture into the PVC sleeve ensure that the cable does not become trapped.
- Replace front bezel. See Fig-1-A7.
- Restore power supply, switch on and test for satisfactory operation.

Wood Board Installation – PVC Installation Sleeve NOT required

- Remove front bezel. See Fig-1-B1
- Cut off the tip of the cable gland on the luminaire to install incoming supply cable. See Fig-1-B1.
- Cut the required hole size into the wood board - ACSQLEDWL – 85mm x 82mm, then feed the supply into the fixture. See Fig-1-B2 Connect the incoming supply cable to the luminaire. See Fig-1-B. See connections below.

• Connect as follows:	LIVE	(L)	BROWN OR RED
	NEUTRAL	(N)	BLUE OR BLACK
	EARTH		GREEN / YELLOW

- Sufficient cable is to be left during installation to allow the luminaire to be removed for any future maintenance that may be required.
- It is the installer's responsibility to provide adequate electrical connections to maintain the correct IP rating for the installed environment. This is in accordance to BS EN 7671.
- Ensure that there are no exposed conductors and when installing the fixture into the PVC sleeve ensure that the cable does not become trapped.
- Replace front bezel. See Fig-1-B3.
- Restore power supply, switch on and test for satisfactory operation.



- Luminaire not suitable for covering with thermally insulating material.

IP65



Maintenance:

1. This luminaire contains no serviceable parts.
2. If replacing the LED Driver, please ensure the driver is the correct size for the application and the secondary output is 700mA constant current with a minimum power rating of 3W per LED.



Disposal of Electronic Equipment WEEE Directive 2002/96/EC

This product falls within the scope of the Waste Electrical & Electronic Equipment Directive (WEEE), which means the product should not be disposed of as normal household waste. Ensure that this luminaire and lamp is disposed of in accordance with the WEEE Directive. Contact a local Council Waste Dept. Local Amenity Site, or the Environment Agency for further information. **RoHS** - All components and materials used in this product are **RoHS** 2002/95/EC compliant.



Blue / Black




Brown / Red



ACSQLEDWL

Camini IP65 LED Wall Light - Square

 Do not stare at the light source

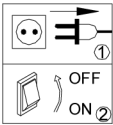


FIG-1
Concrete Installation

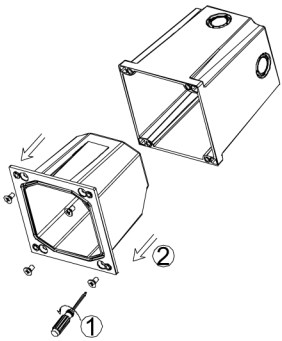


FIG-2

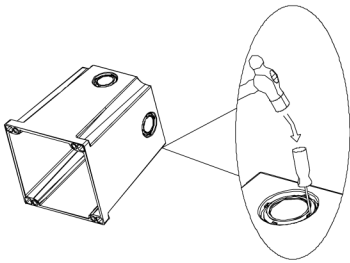


FIG-3

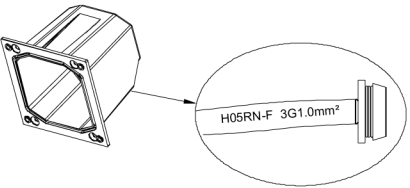


FIG-4

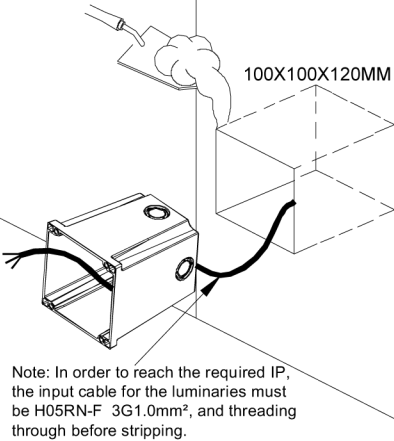


FIG-5

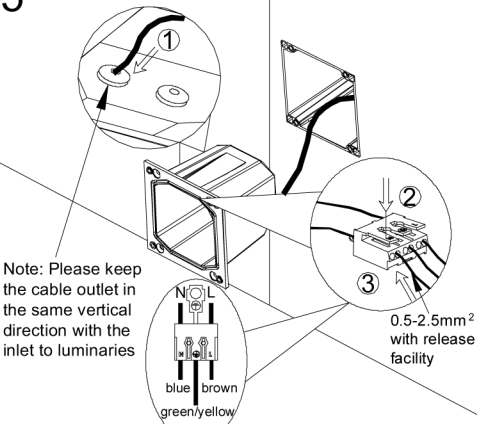


FIG-6

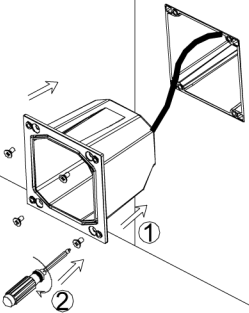


FIG-7

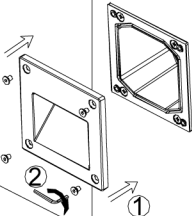
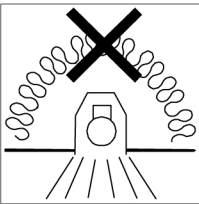


FIG-8



Luminaires not suitable for covering with thermally insulating material.....