



collingwood

light your moment

Spydra CSP



Low-voltage
spike light

IP66 | CCT switchable

Spydra CSP

Low-voltage colour switchable spike light



Size	Anthracite domed cover	Black domed cover	Anthracite flat cover	Black flat cover
300mm	SPYA3DCS	SPYB3DCS	SPYA3FCS	SPYB3FCS
600mm	SPYA6DCS	SPYB6DCS	SPYA6FCS	SPYB6FCS

Choice of size, style and colour

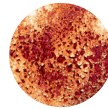
Available in 300mm and 600mm sizes and black or anthracite finishes to match your decor.

Offering a choice of domed or flat covers. Installation spike is included with product. Base plate for surface mounting, available.



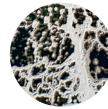
Suitable for coastal environments

Built for the most extreme of environments.



Corrosion resistant

Keeps product looking great for it's entire lifespan.



Salt mist protection

Protected in coastal areas.

CCT switchable

First to market, easily change the colour temperature using the CCT switch under the removeable top cover.

2200K



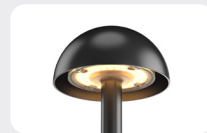
3000K



Wattage options

Two lumen outputs are available depending on which driver is used. 350mA driver for 3W or a 700mA driver for 6.5W.

3W (350mA driver)



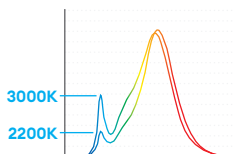
6.5W (700mA driver)



2200K **Ember** light

Minimising the blue light content of outdoor lighting is key to improving the survival and growth rates of nocturnal animals.

The amount of blue light in 2200K is significantly less than 4000K or even 3000K.



Dimmable

Can be dimmed with a compatible driver



IP66

IP66 rating means that the range of installation environments is vast.

