

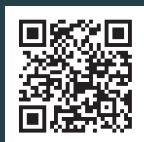
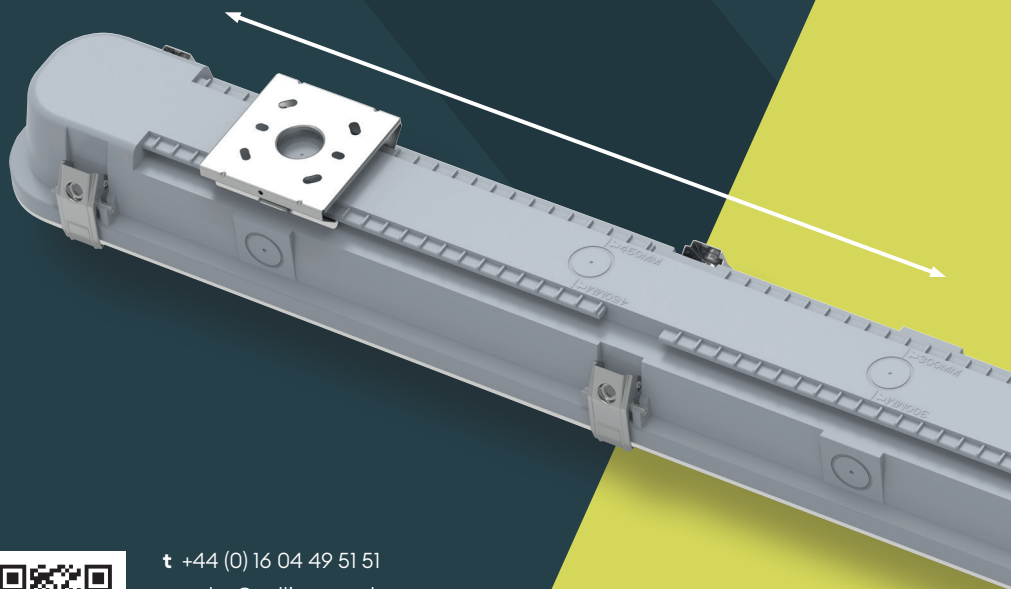
UNIQUE FULL LENGTH MOUNTING SLIDER

CAIMAN VERSA

Save time and money on installation

Flexible first-fix bracket that runs
the length of the product

IP66 + IK10 Anti-Corrosive



t +44 (0) 16 04 49 51 51
e sales@collingwoodgroup.com
collingwoodlighting.com



 By INOVARA


COLLINGWOOD
LIGHTING

LIGHT QUALITY (CCT SWITCHABLE)

Choose the ideal CCT for the environment you are using your anti-corrosives. 3 colour temperatures in 1 product.

3000K

Warm White



4000K Cool

White (default)



5700K

Daylight



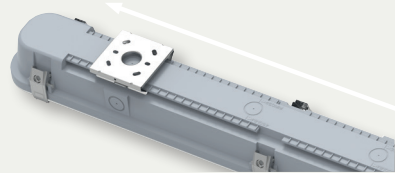
WATTAGE SWITCHABLE

Caiman Versa provides both the output of a single and a twin anti-corrosive within the same product.

Product	Wattage output	Lumen output (max)
2ft	10 - 12 - 15 - 18W	1350 - 1800 - 2250 - 2700lm
4ft	18 - 25 - 31 - 37W	2775 - 3750 - 4650 - 5550lm
5ft	28 - 38 - 48 - 56W	4200 - 5700 - 7200 - 8400lm
6ft	33 - 45 - 56 - 67W	5025 - 6750 - 8400 - 10050lm

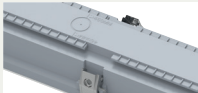
FULLY FLEXIBLE FIRST-FIX BRACKET

A unique full mounting slider which spans the full length of the luminaire on the back of the housing. The bracket can slide anywhere along the rear of the luminaire. This feature removes the need for measuring up where to place the bracket drill points, simply affix your bracket to the surface and push-fit the luminaire onto the bracket.



MOUNTING OPTIONS

Design to have rear and side conduit entry points and moveable terminal block locations to suit the cable entry, Caiman Versa can be surface mounted to BESA, solid ceilings, walls or suspended on chain.



PLUG & PLAY KITS

Convert your product in seconds to have a sensor to save energy using our Versabox accessory range.

Manual test Emergency : **ACKITMANEM**

Self test Emergency : **ACKITSELFEM**

DALI-2 Emergency* : **ACKITDALIEM**

Microwave sensor on/ off : **ACKITMWS**

Microwave sensor DIM* : **ACKITMWSDIM**

* Assembled on demand by Collingwood production.

PRODUCT FEATURES



7 Year
Warranty

PRODUCT CODES

Product	Code	Product	Code	Product	Code	Product	Code
2ft	AC2N	2ft Manual-test EM	AC2NEM	2ft DALI-2/PUSH DIM	AC2D	4ft 0-10V	AC4V
4ft	AC4N	4ft Manual-test EM	AC4NEM	4ft DALI-2/PUSH DIM	AC4D	5ft 0-10V	AC5V
5ft	AC5N	5ft Manual-test EM	AC5NEM	5ft DALI-2/PUSH DIM	AC5D	6ft 0-10V	AC6V
6ft	AC6N	6ft Manual-test EM	AC6NEM	6ft DALI-2/PUSH DIM	AC6D		