

## AVM configuration via web pages

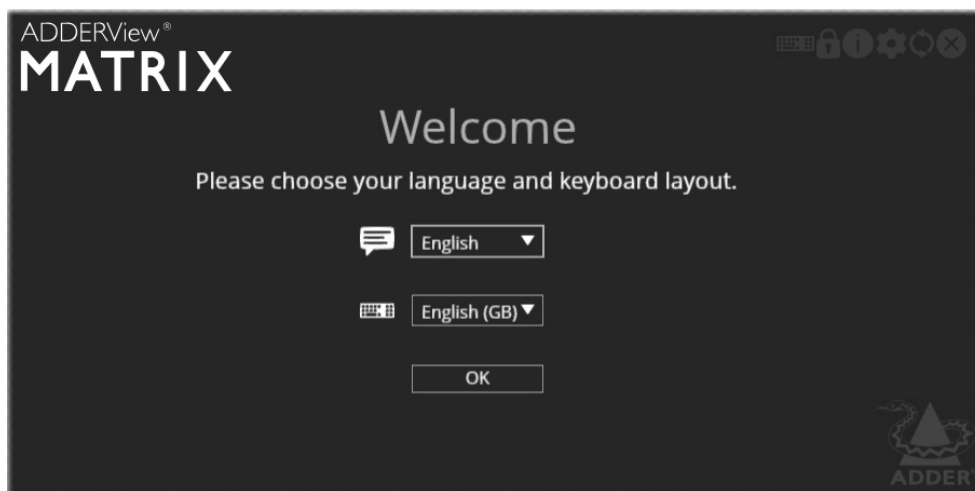
Each AVM unit hosts its own internal set of web pages which contain all configuration details and settings. You will need to use a computer connected to the same network as each AVM unit to access the web pages. Additionally, on the console attached to the USR unit, you can access its configuration details via the On Screen Display (OSD) by pressing **CTRL + ALT + C**

### To manually configure AVM units via their web pages

Run a web browser on your computer and enter the IP address of the required AVM unit:

The default addresses are: **CAM:** <https://169.254.1.33>  
**USR:** <https://169.254.1.32>

The opening page should be displayed:



Full user details and setup instructions can be found at:  
<https://www.adder.com/en/kvm-solutions/adderview-matrix-range>



[www.adder.com](http://www.adder.com)

## Welcome

This quick start guide covers some of the key points of the ADDERView™ Matrix. Full user details and setup instructions can be found at <https://www.adder.com/en/kvm-solutions/adderview-matrix-range>. Please read the supplied safety instruction leaflet before use.

## Initial configuration

ADDERView™ Matrix (AVM) units can be linked in two main ways: Direct or in a Matrix.

To streamline initial configuration processes, all ADDERView Matrix units employ a Start of Life (SoL) procedure when they are in an unconfigured state; either because they are new or because they have undergone a factory reset.

*Note: If the standard settings have been changed in a previous installation, you merely need to perform a manual factory reset on each unit, see overleaf.*

### Direct linking

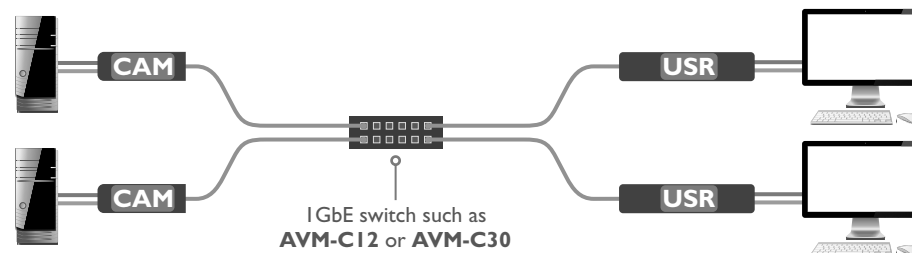
Simply link the network ports of the CAM and USR. When powered on, they will use their standard link local IP addresses to locate each other and allow direct access between them:



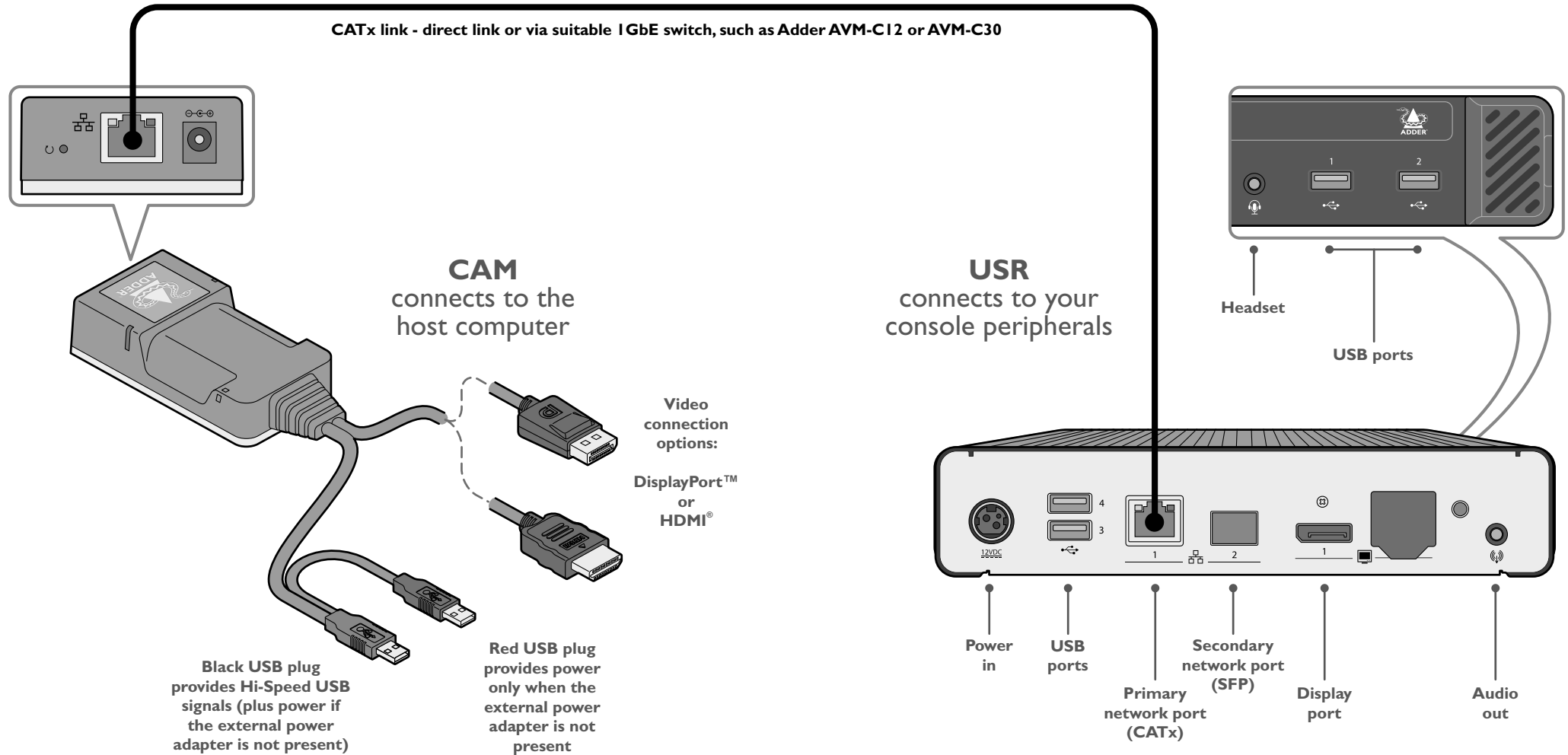
*Note: It is also possible to link two CAMs (and their host computers) directly to a single USR - an optional SFP module first needs to be installed in the USR. Full details are available in the user guide.*

### Matrix linking

You can quickly create a matrix configuration of ADDERView Matrix units, i.e. multiple CAMs and USRs, which can freely cross-connect via a suitable 1GbE network switch. The maximum number of CAM sources that can be made available to any USR is sixteen.



## Connections



### CAM - To perform a manual factory reset

- 1 Power on the CAM ie, switch on the host computer.
- 2 Use a narrow implement (e.g. a straightened-out paper clip) to press-and-hold the recessed reset button for more than 15 seconds until the status indicators turn **blue**.
- 3 Release the reset switch. The indicators will remain **blue** for a short while (less than ten seconds) while the CAM configures itself and should then change to **green** if all connections are correct; or **orange** if one or more of the video, USB and/or network links are missing.

*Note: Allow the CAM to fully complete the reset process by waiting for at least 30 seconds after you release the button.*

### USR - To perform a manual factory reset

- 1 Power on the ADDERView Matrix USR.
- 2 Use a narrow implement (e.g. a straightened-out paper clip) to press-and-hold the recessed reset button on the front panel for roughly ten seconds, until the status indicator turns **blue** (*Note: alternating red/green indications will occur during the ten second period while the button is still pressed*).
- 3 Release the reset switch. The indicator will change to **red** for a short while (less than ten seconds) and then back to **blue** while the ADDERView Matrix USR performs the reset and should then change to an alternative color, usually **orange** initially, signifying that the operation is complete.

*Note: If you are performing a factory reset and intend to disconnect the power immediately after the reset, wait at least 30 seconds after you have released the reset button for it to complete.*

