

ALIF configuration via web pages

Each ALIF unit hosts its own internal set of web pages which contain all configuration details and settings. You will need to use a computer connected to the same network as each ALIF unit to access the web pages. Additionally, on the console attached to the ALIF RX unit, you can access its configuration details via the On Screen Display (OSD) by pressing **CTRL + ALT + C**

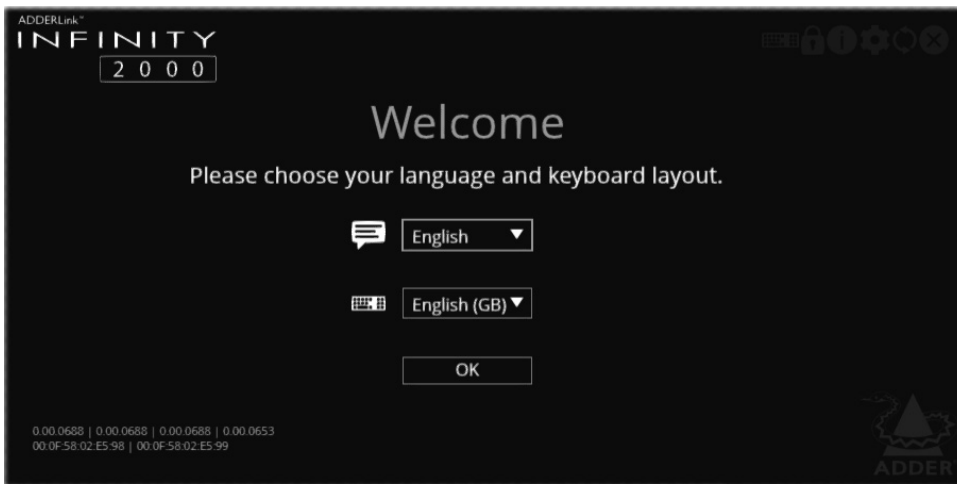
To configure ALIF units via their web pages

Run a web browser on your computer and enter the IP address of the required ALIF unit:

The default addresses (if using port 1) are
TX: https://169.254.1.33
RX: https://169.254.1.32

The default addresses (if using port 2) are
TX: https://169.254.1.43
RX: https://169.254.1.42

The opening page should be displayed:



Full user details and setup instructions can be found at:
www.adder.com/en/kvm-solutions/adderlink-infinity-2102



www.adder.com

Welcome

This quick start guide covers some of the key points of the ADDERLink™ INFINITY 1100 and 2100 series. Full user details and setup instructions can be found at www.adder.com/en/kvm-solutions/adderlink-infinity-2102. Please read the supplied safety instruction leaflet before use.

Initial configuration

ALIF units can be linked in two main ways: Direct or Networked.

Note: References made specifically to ALIF2100 in this guide also apply to ALIF1100 units.

Direct linking

Where ALIF transmitters and receivers are directly linked to each other, very little configuration action is required, provided that they both have their factory default settings in place - just link them together. If the standard settings have been changed in a previous installation, you merely need to perform a **manual factory reset** on each unit. Please see the center pages.

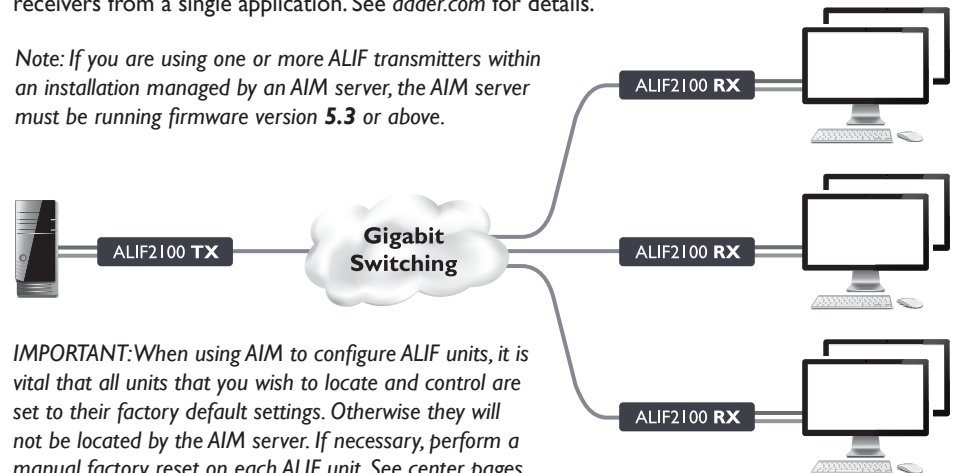


Networked linking

Where ALIF units are connected via networked links, you can either configure them individually, or configure them collectively using an AIM server:

- **Configuring networked ALIF units individually** - You need to specify the network addresses of the ALIF2100 units so that they can locate each other. This can be done using via OSD on the console connected to the RX unit by pressing **CTRL + ALT + C**. Please see the rear page.
- **Configuring networked ALIF units collectively** - The ADDERLink™ INFINITY Management (AIM) server allows you to configure, control and coordinate any number of ALIF transmitters and receivers from a single application. See adder.com for details.

Note: If you are using one or more ALIF transmitters within an installation managed by an AIM server, the AIM server must be running firmware version 5.3 or above.



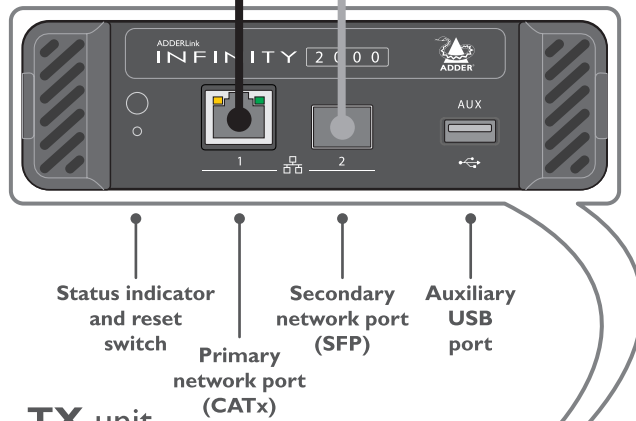
IMPORTANT: When using AIM to configure ALIF units, it is vital that all units that you wish to locate and control are set to their factory default settings. Otherwise they will not be located by the AIM server. If necessary, perform a **manual factory reset** on each ALIF unit. See center pages.

Connections

Secondary link (using IGbE CATx or fiber SFP modules) - direct link or via suitable switch

Primary link (using IGbE CATx) - direct link or via suitable switch

Note: The images shown here are for ALIF2100. ALIF1100 units are slightly different in appearance but connect and operate in the same way.



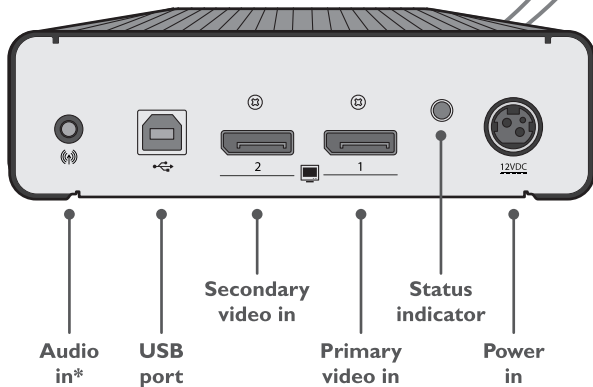
Teaming

ALIF units are ready to automatically invoke teaming whenever the CATx and SFP (with either CATx or fiber modules installed) ports are both used to link transmitters and receivers. Teaming potentially doubles the available bandwidth for video intensive applications and also provides redundancy in case one link is lost.

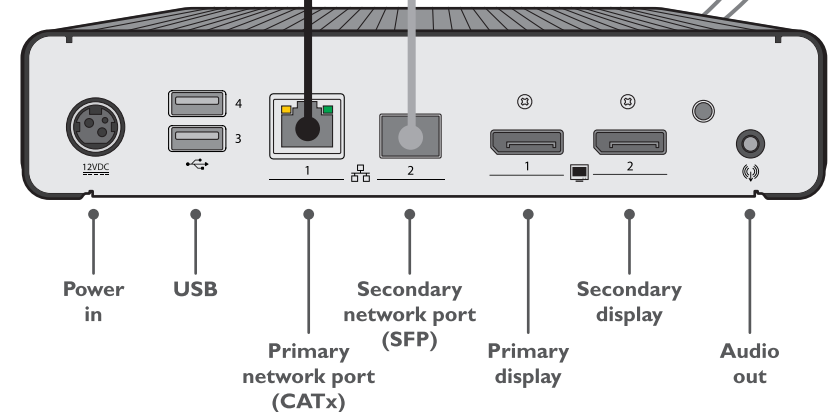
*The units benefit from multiple audio signal streams:

- **Uni-directional analog audio** - from the host PCs jack socket,
- **Uni-directional digital audio** - via the video connection,
- **Bi-directional digital audio** - via the USB connection (converted to/from analog).

TX unit



RX unit



Main status indicators

Green	All services present.
Amber	Running but video, USB or network link missing.
Red	Booting before processor loaded or failed.
Red rapid flash	Critical error has been detected (a message will also be displayed within the OSD.)
Blue	Factory reset mode active.
Red/green flash	Booting into factory recovery mode.
Green/blue flash	Upgrade mode active.
Fast green flash	Identify mode active.

To perform a manual factory reset

A factory reset returns ALIF unit to its default configuration.

- 1 Power on the ALIF unit.
- 2 Use a long narrow implement (e.g. a straightened-out paper clip) to press-and-hold the recessed reset button on the front panel for roughly ten seconds, until the status indicator turns **blue** (Note: alternating red/green indications will occur during the ten second period while the button is still pressed).
- 3 Release the reset switch. The indicator will change to **red** for a short while (less than ten seconds) and then back to **blue** while ALIF unit performs the reset and should then change to an alternative color, usually **orange** initially, signifying that the operation is complete.

Note: If you are performing a factory reset and intend to disconnect the power immediately after the reset, you must wait at least 30 seconds after you have released the reset button for it to complete the process.

