

Safety Information

>All electrical work must be undertaken by a qualified contractor to ensure compliance with latest edition BS 7671 and IEE/IET wiring regulations.

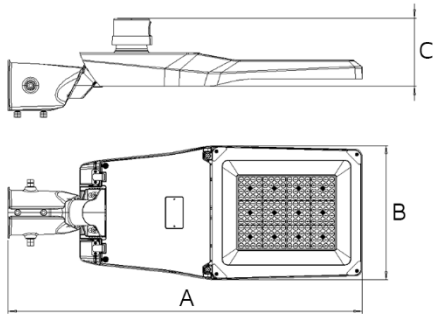
> Before installing an LED Street Light or doing any maintenance, ensure power supply is turned off at the circuit breaker or fuse box.

> This product is designed for permanent connection to fixed wiring; the circuit should be protected with the appropriate MCB or fuse.

Environment

> Please DO NOT dispose of electrical items or packaging as unsorted waste. Use the recycling facilities provided by your local authorities.

PRODUCT DIMENSIONS



	A	B	C
30W	670	232	143
50W	670	232	143
80W	670	232	143
100W	745	282	143
130W	745	282	143

All units are in mm

Important Warranty Information

The LED Street Light has a 3 year warranty, which can be extended free of charge to 5 years by registering online via the website address below. The registrant must provide the product part number and date of manufacture, which can be found on the label attached to the luminaire housing.



Certificate No. FS 590684



Certificate No. EMS 590685

NET LED Lighting
 Buckingway Business Park
 300 Anderson Road
 Cambridge
 CB24 4UQ
 sales@netled.co.uk
 www.netled.co.uk

Technical Helpline: 01223 851505
 Email: support@netled.co.uk

www.netled.co.uk/downloads

Distributed by



**LED STREET LIGHT
 INSTALLATION GUIDE**

Part Number	Description
NET-33-20-50	30W Street Light - 3000K / 4000K
NET-33-20-51	50W Street Light - 3000K / 4000K
NET-33-20-52	80W Street Light - 3000K / 4000K
NET-33-20-53	100W Street Light - 3000K / 4000K
NET-33-20-54	120W Street Light - 3000K / 4000K



SUPPLY/EARTH CLASS

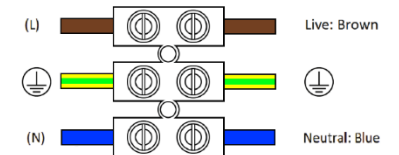
100-270V AC 50/60 Hz
 Fig.1 Mains Input Termination



Class I

Luminaire

Mains Supply



Installation procedure: Carefully read the installation instructions and ensure the mains supply is isolated before installation. Please read the safety information overleaf before carrying out any installation. Please retain the leaflet for future reference.

Street Light Installation:

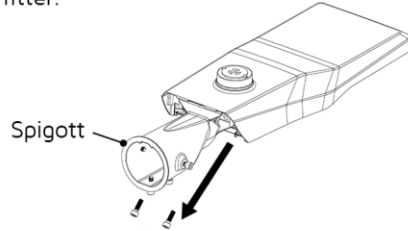


Replaceable control gear by professional

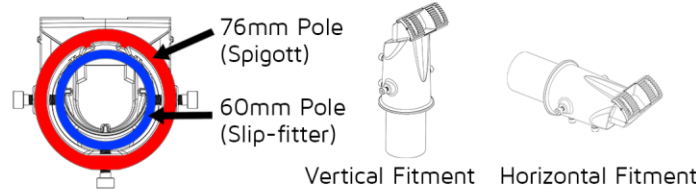


Non-replaceable light source

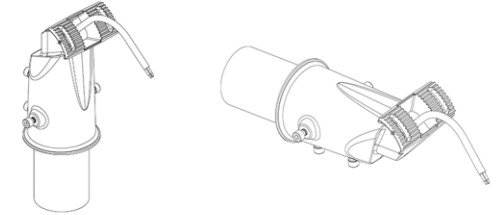
Step 1: Remove the screws holding the slip-fitter, then remove the slip-fitter.



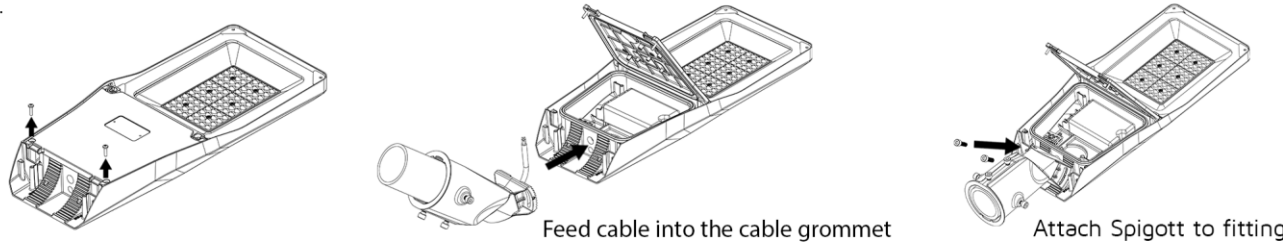
Step 2: Select the correct spigott/slip-fitter according to the size of the pole. Mount the spigott/slip-fitter on the pole and secure it by tightening the four screws.



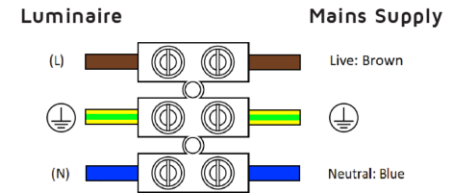
Step 3: Insert the cable into the pole and spigott. Note: Cable not provided.



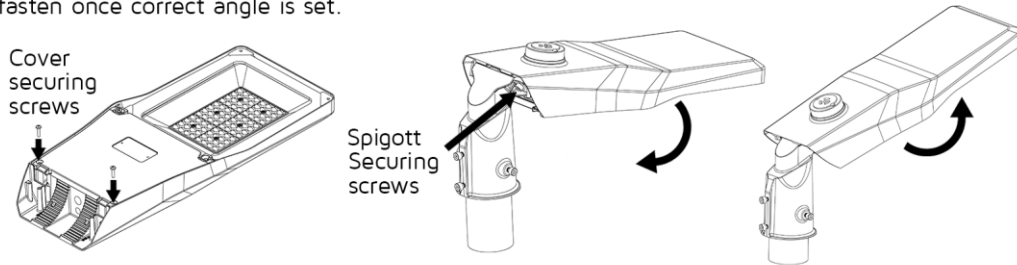
Step 4: Remove the securing screws and open the cover. Feed the cable into the cable grommet and attach the fitting to the spigott.



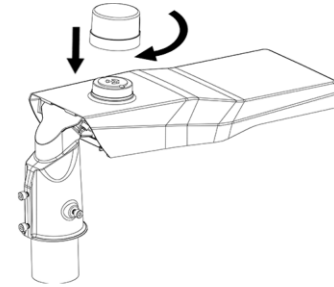
Step 5: Connect the cable to the fitting according to the wiring diagram below. The circuit will be surge protected by the driver.



Step 6: Close the cover and fasten the cover securing screws. Alter the Street Light angle if required. The angle can be adjusted in 5° increments by loosening the securing screws, then fasten once correct angle is set.



Step 7: Install grey blanking cap or photocell sensor by pushing downwards and twisting until it is secured in position.



Accessories

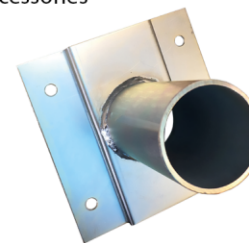
Photocell Sensor

Add a Photocell Sensor to ensure the unit is switched off during daylight hours.

NET-23-20-08



Additional accessories



Flat Wall Bracket
NET-23-16-53



Double Outreach Arm Bracket
NET-23-16-51