

### Safety Information

>All electrical work must be undertaken by a qualified contractor to ensure compliance with latest edition BS7671 and IEE/IET wiring regulations.

> Before installing the DALI LED T5 Tube or doing any maintenance, ensure power supply is turned off at the circuit breaker or fuse box.

> This product is designed for permanent connection to fixed wiring; the circuit should be protected with the appropriate MCB or fuse.

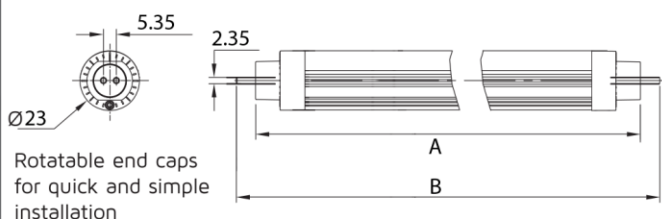
### Environment

>Please DO NOT dispose of electrical items or packaging as unsorted waste. Use the recycling facilities provided by your local authorities.

### Constant current LED driver power table:

Product description	Voltage	Current
3ft DALI T5 LED Tube	66V	150mA
4ft DALI T5 LED Tube	66V	200mA
5ft DALI T5 LED Tube	66V	250mA

### PRODUCT DIMENSIONS



All dimensions are in mm	A	B
3ft LED Tube	849	857
4ft LED Tube	1148	1156
5ft LED Tube	1449	1457

All dimensions are in mm

### Important Warranty Information

The DALI LED T5 Tube has a 3 year warranty, which can be extended free of charge to 5 years by registering online via the website address below. The registrant must provide the product part number and date of manufacture, which can be found on the label attached to the luminaire housing.



Certificate No. FS 590684



Certificate No. EMS 590685

NET LED Lighting  
Buckway Business Park  
300 Anderson Road  
Cambridge  
CB24 4UQ  
sales@netled.co.uk  
www.netled.co.uk

Technical Helpline: 01223 851505  
Email: support@netled.co.uk

www.netled.co.uk/downloads

Distributed by



PRD-40-10-112

### DALI T5 LED TUBE INSTALLATION GUIDE

Part Number	Description
NET-55-01-02	3ft DALI T5 Tube 12W - 4K - No Driver
NET-55-01-04	4ft DALI T5 Tube 16W - 4K - No Driver
NET-55-01-06	5ft DALI T5 Tube 20W - 4K - No Driver
NET-55-01-14	3ft DALI T5 Tube 12W- 4K - Incl. Dali Driver
NET-55-01-16	4ft DALI T5 Tube 16W - 4K - Incl. Dali Driver
NET-55-01-18	5ft DALI T5 Tube 20W - 4K - Incl. Dali Driver

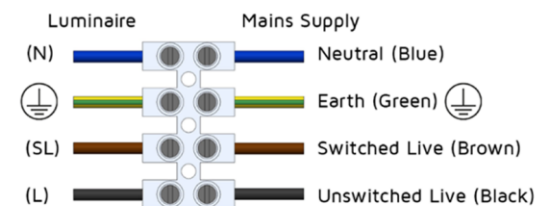


### SUPPLY/EARTH CLASS

For LED Driver: 220-240V AC 50/60 Hz Class 1

LED Tube Class 3

### Mains Input Termination



**Installation procedure:** Carefully read the installation instructions and ensure the mains supply is isolated before installation. Please follow the safety information overleaf before carrying out any installation. Please retain this leaflet for future reference.

**For a light fitting with an electronic ballast:**

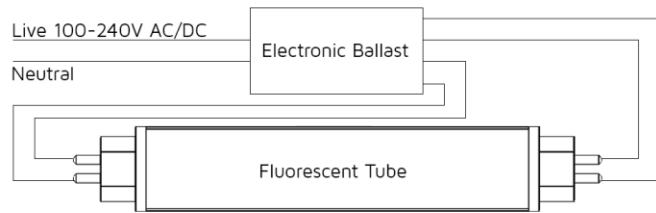


Replaceable light source by professional only

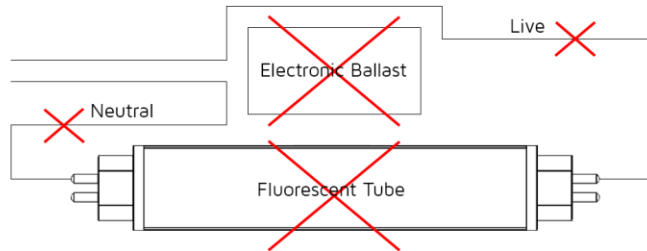


Replaceable control gear by professional only

**Step 1:** Turn off the power supply and locate the electronic ballast in the fitting.

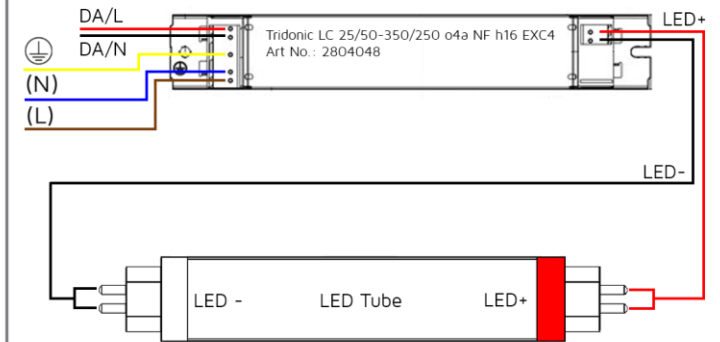


**Step 2:** Remove the electronic ballast along with any additional control gear or power factor correction capacitors as shown in the illustration below.



**Note:** A qualified electrician is required to remove/bypass the ballast from the fitting.

**Step 3:** Attach Live, Neutral and Earth input power wires to the Tridonic driver. Attach the DA/L and DA/N wires to the DALI driver ports. Then attach LED+/- wires to the the driver LED output ports. Please note, the LED+/- wiring needs to be connected to both terminals on the LED tube (2x Positive pins on one end, and 2x Negative pins on the opposite side. Red end of LED tube is LED+.



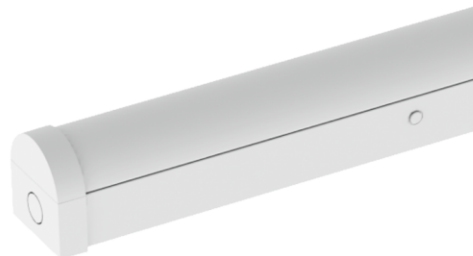
If you have chosen to purchase this tube excluding driver, please ensure the driver is equivalent to Tridonic Art: 2804048

**Optional additional products:** A number of additional compatible products are available. To view our full range, please visit [www.netled.co.uk](http://www.netled.co.uk)

**Have you considered a complete luminaire?**

**Foxton Battens**

We supply LED battens which are well-suited for use in offices, corridors, receptions, schools and hospitals.



**Hilton Non-Corrosive Luminaire**

We supply IP65-rated (weather and dustproof) luminaires. These can be supplied with stainless steel retaining clips (sold separately). Designed for use in industrial, storage and outdoor environments.



**3 Hour Emergency Kits**

We supply 3 Hour Emergency Kits for our T5 LED Tubes. DALI options available

