

## Important Information

We recommend that luminaires are installed by a qualified electrician ensuring the installation complies with current IEE wiring regulations BS7671:2018 & local building control.

- All tests should be carried out in accordance to EN 50172:2004.
- BELL will not accept responsibility for any claims arising from a poor installation.
- The light source of this luminaire is not replaceable: when the light source reaches end of life, the whole luminaire must be replaced.

## Important User Advice

- The ambient room temperature should not exceed 30°C.
- Ensure that there is adequate free air ventilation around the fitting.
- It may be necessary to uprate your MCBs to allow for increased inrush current.
- Always switch off mains supply before installing.

This product may contain substances that can be hazardous to the environment if not disposed of properly. Electrical and electronic equipment should never be disposed of with general household waste but must be separated for its correct treatment and recovery. Where possible recycle your packaging.



## NOT Insulation Coverable

Not suitable for covering with insulation material

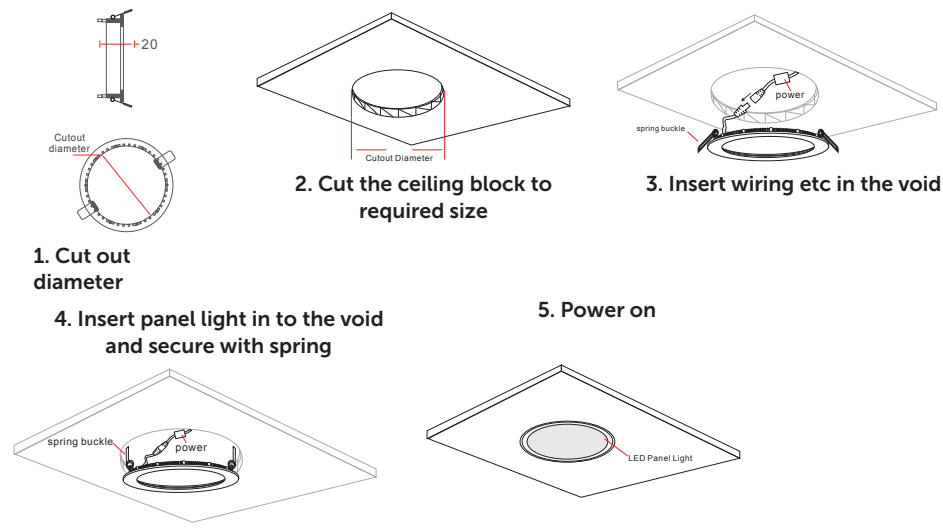


Read these instructions before installation and retain for future reference

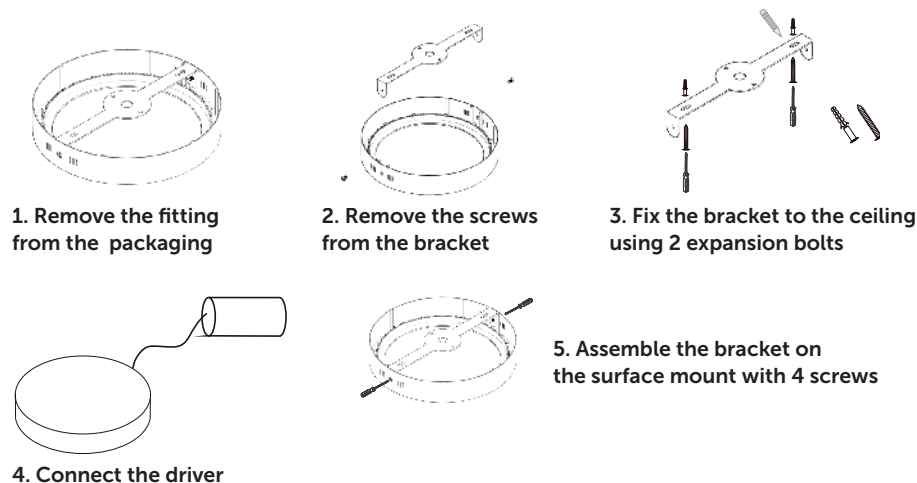
This equipment should be installed by a competent electrician



## Flush Mounted Version

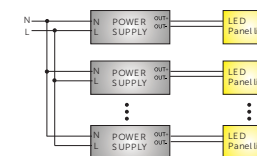


## Surface Mounted Version

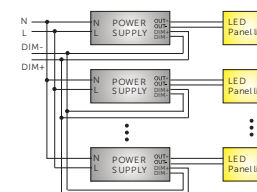


## System Connection Diagrams

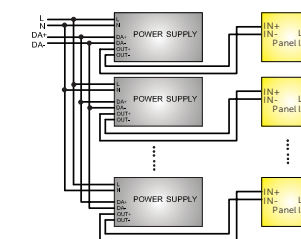
Wiring of the panel with non dimmable driver



Wiring of the panel with 1-10V dimmable driver



Wiring of the panel with DALI driver



## Cut Out Dimensions

Code	Panel	Cut Out
09730	Ø146mm 9W	Ø130mm
09729	Ø170mm 12W	Ø160mm
09731	Ø190mm 15W	Ø180mm
09732	Ø225mm 18W	Ø210mm
09733	Ø300mm 24W	Ø282mm