

## Important Information

We recommend that luminaires are installed by a qualified electrician ensuring the installation complies with current IEE wiring regulations BS7671:2018 & local building control.

- BELL will not accept responsibility for any claims arising from a poor installation.
- The light source of this luminaire is not replaceable: when the light source reaches end of life, the whole luminaire must be replaced.
- Operating Temperature -30°C to +35°C.

**Warning Before installation ensure power is disconnected.**

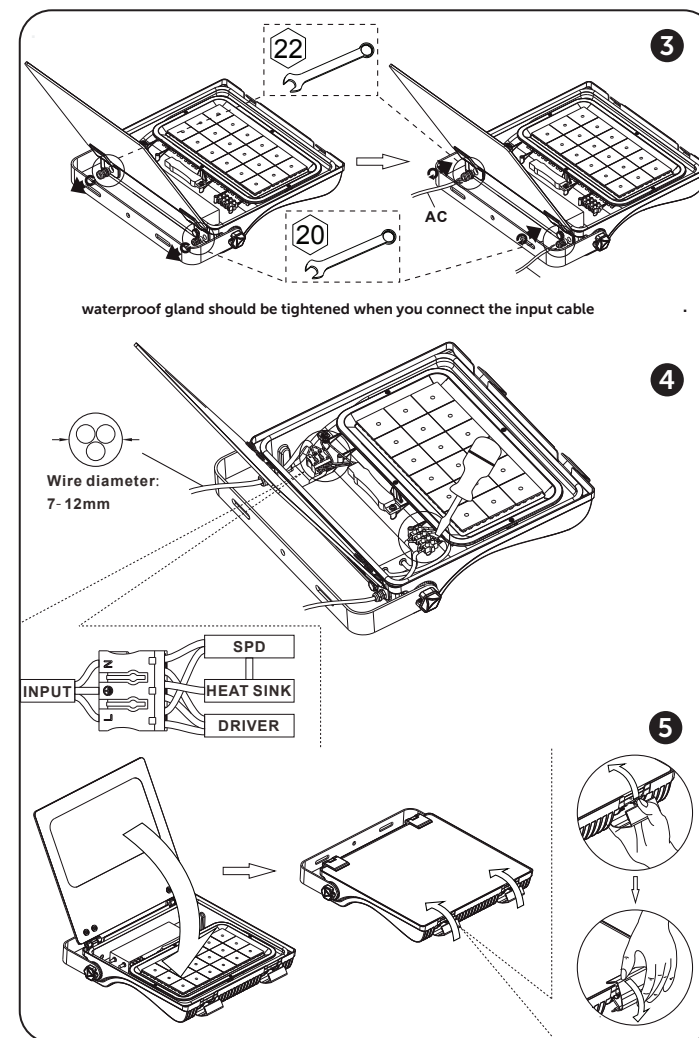
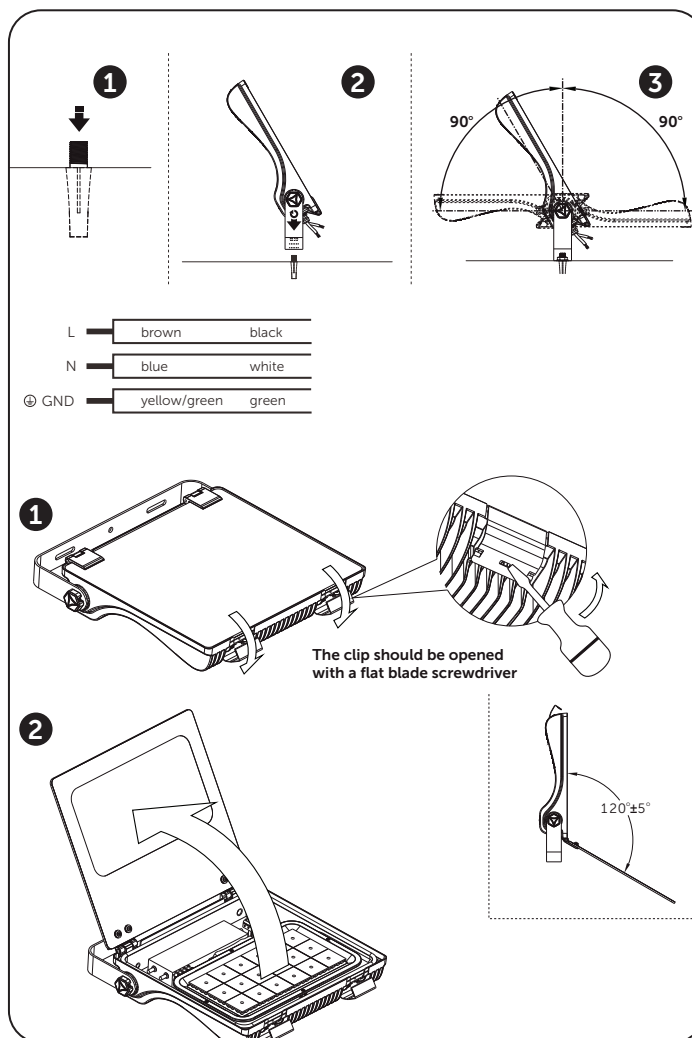
This product may contain substances that can be hazardous to the environment if not disposed of properly. Electrical and electronic equipment should never be disposed of with general household waste but must be separated for its correct treatment and recovery.

Where possible recycle your packaging.



Read these instructions before installation and retain for future reference

This equipment should be installed by a competent electrician



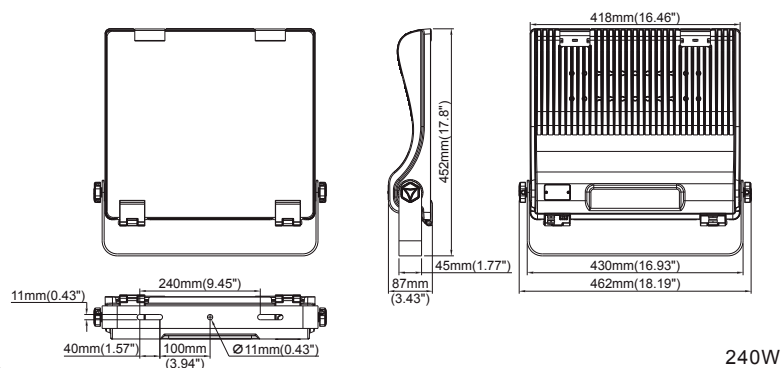
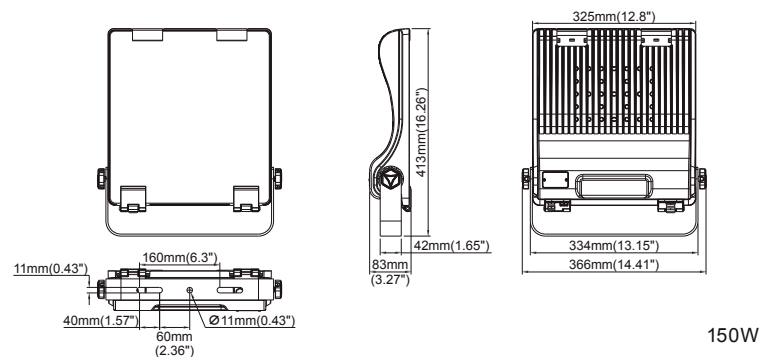
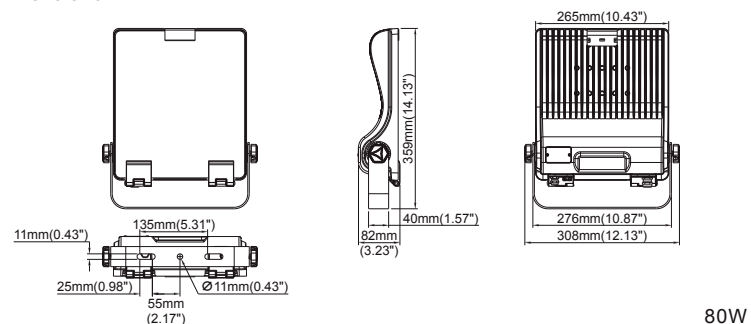
Technical Helpline +44 (0)1924 893380

[www.bellighting.co.uk](http://www.bellighting.co.uk)

British Electric Lamps Ltd, Unit A Foxbridge Way  
Normanton Ind Est, Normanton, West Yorkshire. WF6 1TN

T: +44 (0)1924 893380 F: +44 (0)1924 894320 E: [sales@bellighting.co.uk](mailto:sales@bellighting.co.uk)

## Dimensions



Product Specifications	80W	150W	240W
Input Voltage	AC 100/240V		
Power Frequency	50/60 Hz		
Outlook Dimensions	359 x 308 x 82mm	413 x 366 x 83mm	462 x 452 x 87mm
Luminaire Net Weight +/- 0.3 kg	4.6 kg	6.8 kg	8.9 kg
Working Temperature	-30°C - +35°C		
Storage temperature	-40°C - +70°C		

**Technical Helpline +44 (0)1924 893380**  
[www.bellighting.co.uk](http://www.bellighting.co.uk)

**British Electric Lamps Ltd**, Unit A Foxbridge Way  
 Normanton Ind Est, Normanton, West Yorkshire. WF6 1TN

T: +44 (0)1924 893380 F: +44 (0)1924 894320 E: [sales@bellighting.co.uk](mailto:sales@bellighting.co.uk)