



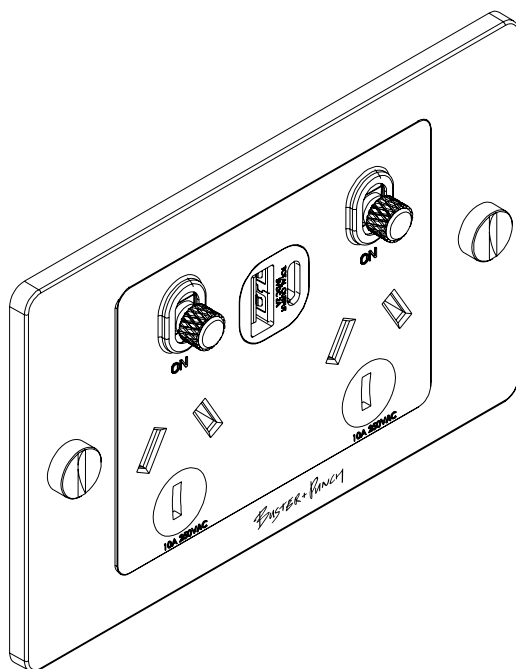
LONDON

## ELECTRICITY

### ANZ 2G GPO SOCKET AND USB A+C CHARGER

PREPARATION AND INSTALLATION

#### INSTRUCTION MANUAL



[BUSTERANDPUNCH.COM/AU](https://busterandpunch.com/au)

L0238

EN

## TECHNICAL SPECIFICATION

### 2G GPO SOCKET AND USB A + USB C CHARGER

5VDC 2A Max Charger / 250 VAC / 10A Socket Capacity / DOUBLE INSULATED

Total Max Rating for USB Charger: 5VDC 2A

USB Type A – 5VDC 2A

USB Type C – 5VDC 2A

## IMPORTANT NOTES

### READ BEFORE INSTALLATION

1. All wiring and installation must adhere to the latest local and national regulations.
2. Must be installed by a competent and qualified electrician.
3. Do not exceed the rated power input specification listed on the product.
4. This product is suitable for indoor use only.
5. All USB cables must be removed when not in use.
6. To reduce the risk of discoloration or tarnishing, avoid installation on wet plaster.



AS / NZS 3133 (GPO SWITCH)  
AS / NZS 61558.2.1:2022 (USB MODULE)  
COMPLIES WITH IEC 61558.2.1.

## WARRANTY INFORMATION

The warranty period extends two (2) years from the date of the original purchase.

## RECYCLING ELECTRICAL PRODUCTS

Buster and Punch encourages all its customers to make note of this symbol and avoid putting any waste electrical goods in your domestic waste bin or container. Please ensure you take your waste electrical goods to a suitable facility for disposal.



1



**BEFORE COMMENCING WORK, ISOLATE THE MAINS POWER SUPPLY AT CIRCUIT BREAKER.**



**CAUTION:**  
Verify power supply is OFF before proceeding.

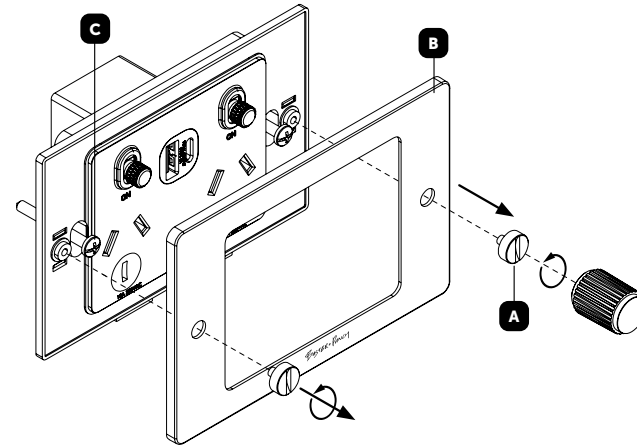
2 IF UNIT IS TO BE USED AS A REPLACEMENT FOR AN EXISTING PRODUCT, REMOVE EXISTING UNIT FROM ITS LOCATION AND DISCONNECT THE WIRING.



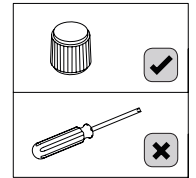
**CAUTION:**  
Verify power supply is OFF before proceeding.

3

**REMOVE THE UNIT FROM ITS PACKAGING. REMOVE THE COIN CAP SCREWS (A) USING TOOL PROVIDED/ THIS WILL RELEASE FACE PLATE (B) TO REVEAL THE LOCATIONS FOR THE MOUNTING SCREWS REQUIRED FOR INSTALLATION (C).**



**!** To avoid damage to the coin caps, always fasten using the plastic tool provided.



\*\* Do NOT use a standard screw driver to tighten the coin caps. This may damage the cap and is not covered under warranty. Plastic coin cap tool must be used by hand only.

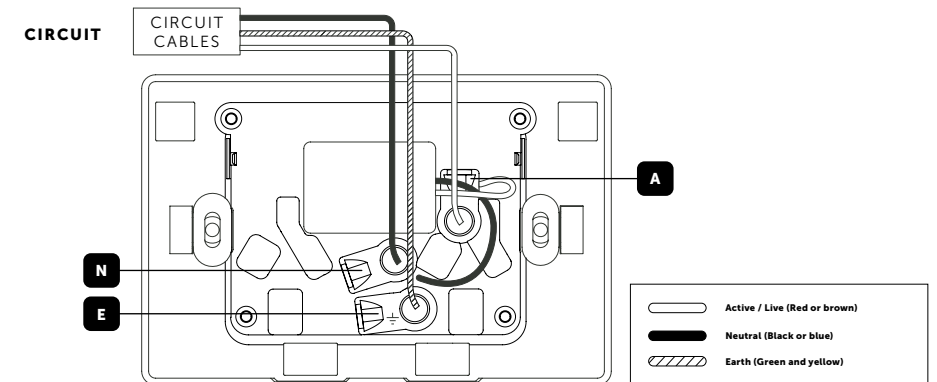
4

**PLEASE CONNECT CABLING AROUND MODULE WIRES TO MAKE SURE THERE IS NO CHAFING AND SNAGGING.**

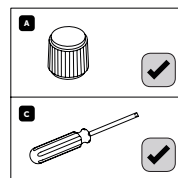
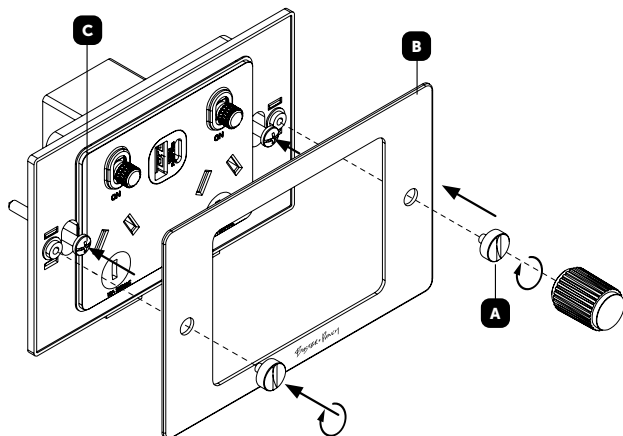
Connect the wires as shown in wiring diagram below, with the active supply wire in the terminal marked A & the neutral supply wire in the terminal marked N. The earth wire is to be installed into the terminal marked E.

Use green / yellow sleeving on earth conductors that are not insulated. Ensure terminals are properly tightened, cables are secured and no bare wire is visible.

Push unit back into mounting box ensuring no cables become trapped.



**5 USE A SCREWDRIVER TO FIX THE UNIT ONTO THE BACKBOX VIA THE SUPPLIED MOUNTING SCREWS (C). FIT THE FACE PLATE (B), AND SECURE USING THE COIN SCREWS (A) USING THE TOOL PROVIDED.**



\*\* Do NOT use a standard screw driver to tighten the coin caps. This may damage the cap and is not covered under warranty. Plastic coin cap tool must be used by hand only.

**6 RESTORE POWER AFTER TESTING CONNECTIONS APPROPRIATELY, FOLLOWING LOCAL GUIDANCE AND WIRING REGULATIONS.**

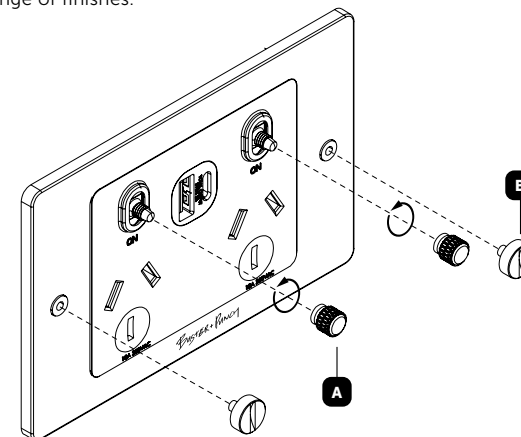


**7 OPTIONAL: CUSTOMISE YOUR SOCKET**

**A).** Remove the socket toggles, unscrewing by hand in an anticlockwise direction. Replace with new B+P socket toggle details.

**B).** Remove the coin caps using the plastic tool provided. Replace with new B+P coin cap details.

Visit [www.busterandpunch.com/au](http://www.busterandpunch.com/au) to discover our range of socket toggle and coin cap details kits, available in a range of finishes.



[end. **ORDINARY** ]