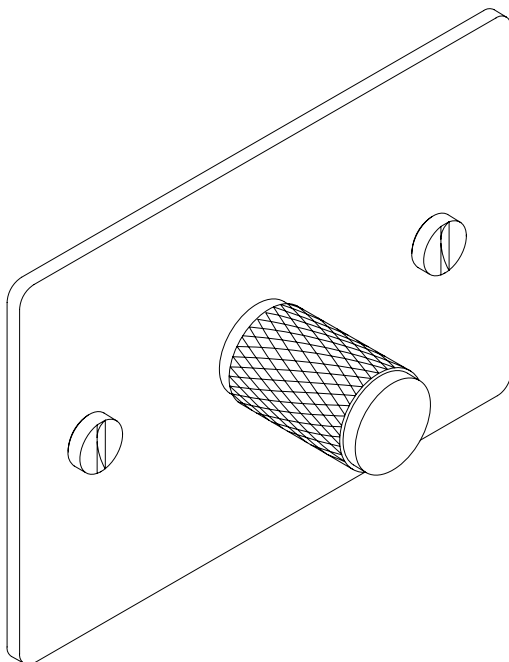




ELECTRICITY ANZ DIMMER SWITCH

DIM-002 + ZDR-SERIES
INSTALLATION MANUAL



BUSTERANDPUNCH.COM/AU
L0069

EN

TECHNICAL SPECIFICATION

1G - 2G DIMMER SWITCH

220-240VAC / 50Hz / 300W (TE) / 150W (LE) / Class II

IMPORTANT NOTES

READ BEFORE INSTALLATION

1. All wiring and installation must adhere to the latest local and national regulations.
2. Must be installed by a competent and qualified Electrician.
3. Do not exceed the rated values listed on the product.
4. Indoor use only.
5. Remove all USB Cables from Charger when not in use.
6. To reduce the risk of discoloration or tarnishing, avoid installation on wet plaster.



IEC 60669-2-1:2002 + A1:2008 in conj.
IEC 60669-1:1998 + A1:1999 + A2:2006

WARRANTY INFORMATION

The warranty period extends two (2) years from the date of the original purchase.

RECYCLING ELECTRICAL PRODUCTS

Buster and Punch encourages all its customers to make note of this symbol and avoid putting any waste electrical goods in your domestic waste bin or container. Please ensure you take your waste electrical goods to a suitable facility for disposal.



FEATURES

THERMAL OVERLOAD PROTECTION

Built-in thermal protect circuit. When the module temperature achieves 110°C will activate the protection. When the temperature cools down to approx. 75°C the dimmer resume normal operation. If this occurs frequently, reduce the load.

SHORT CIRCUIT PROTECTION

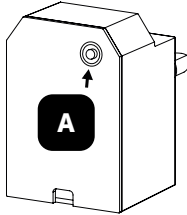
Built-in short circuit protect, once activated, the dimmer will suspend operation. Around 5 seconds after that, it will auto-ON again. If defect remains within the circuit, the short circuit protection will activate again until dimmer power is disconnected and switched ON again, resetting to normal operation. In this case, check the circuit with your certified electrician.

- Suitable for 1-way switching only.
- Suitable for Incandescent + dimmable LED lamp loads only.
- Soft start operation to extend the lifetime of lamps.
- User setting for minimum dimming level.

MINIMUM BRIGHTNESS LEVEL SETTING

HOW TO SET MINIMUM BRIGHTNESS LEVEL:

1. Turn ON the lamp at maximum brightness level.
2. Push rear button (A) once. The lamp will appear at half-brightness level indicating it is ready to set the minimum brightness level.
3. Turn the knob to set desired minimum brightness level, then push button (A) once. The lamp will appear at minimum brightness level then return to normal brightness level once it has confirmed and saved your desired setting.



NOTE:

Setting must be performed within 10 seconds to prevent time-out.

MODE SETTING

THIS DIMMER MODULE HAS TWO DIMMING MODES:

1. Trailing Edge Mode (factory default), suitable dimmable LED lamps + incandescent lamps.
(See compatible loads)
2. Leading Edge Mode, suitable for leading edge dimmable LED loads.
(See compatible loads)


FOR TRAILING EDGE MODE (FACTORY DEFAULT):

1. Turn ON the lamp to min. brightness level.
2. Push and hold button (A) for 5 seconds until lamp appears at half brightness level. Once button is released, the lamp will flash once to confirm and save your desired setting.

FOR LEADING EDGE MODE:

1. Turn ON the lamp to max. brightness level.
2. Push and hold button (A) for 5 seconds until lamp appears at half brightness level. Once button is released, the lamp will flash three times to confirm and save your desired setting.

COMPATIBLE LOADS + RATINGS

MODE	LOAD TYPE	RATING
Trailing Edge	Dimmable Incandescent Lamps 	220-240V~ 50Hz μ 10-300W
Trailing Edge	Dimmable LED Lamps	220-240V~ 50Hz μ 10-300W
Leading Edge	Dimmable LED Lamps	220-240V~ 50Hz μ 10-150W

NOTE:

Never exceed the maximum rated loads for any chosen dimming mode. Exceeding the maximum load may result in thermal cut-out + erratic performance. Reduce the load immediately.

If experiencing flickering at low brightness levels, try increasing the load, changing the dimming mode, or adjusting the minimum brightness setting. Only for use with dimmable load types.

1 BEFORE COMMENCING WORK, ISOLATE THE MAINS POWER SUPPLY AT THE CIRCUIT BREAKER.

BEFORE COMMENCING WORK, ISOLATE THE MAINS POWER SUPPLY AT CIRCUIT BREAKER.

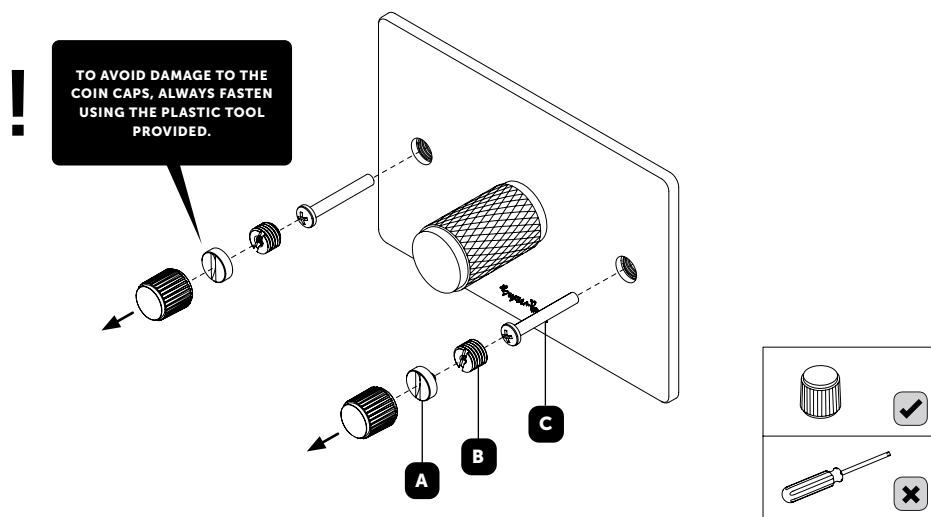


CAUTION:

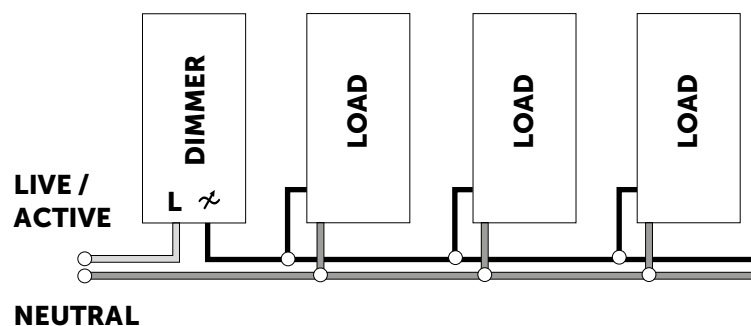
Verify power supply is OFF before proceeding.

2 IF UNIT IS TO BE USED AS A REPLACEMENT FOR AN EXISTING PRODUCT, REMOVE EXISTING UNIT FROM ITS LOCATION AND DISCONNECT THE WIRING.

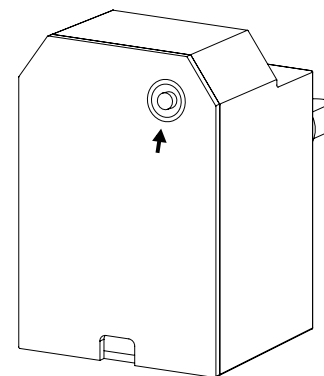
- 3 REMOVE THE UNIT FROM ITS PACKAGING. REMOVE THE COIN CAP SCREWS (A) USING TOOL PROVIDED. IF NOT RELEASED WITH THE COIN CAP SCREWS, UNSCREW THE ISOLATOR PLUGS (B). THIS WILL REVEAL THE OPENING FOR THE MOUNTING SCREWS REQUIRED FOR INSTALLATION (C).**



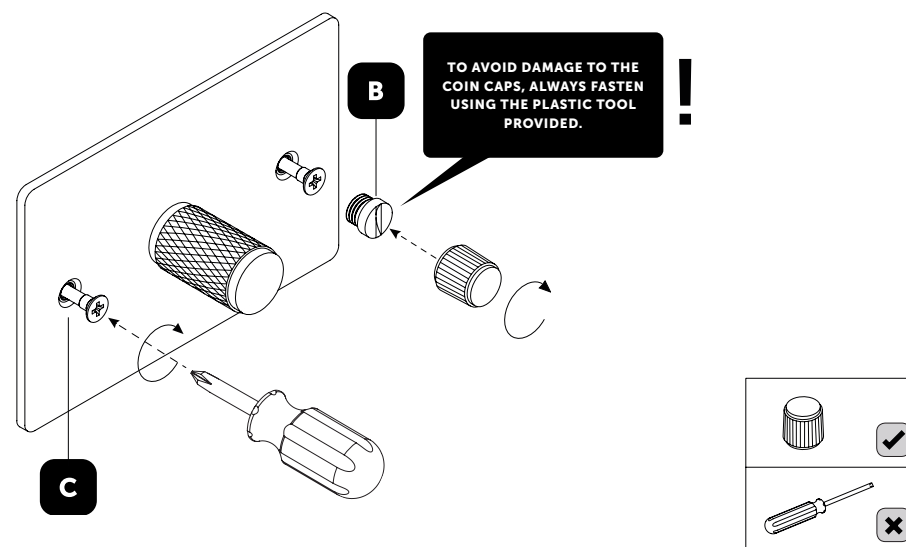
- 4 CONNECT THE WIRES AS SHOWN IN WIRING DIAGRAM BELOW. USE GREEN/YELLOW SLEEVING ON EARTH CONDUCTORS THAT ARE NOT INSULATED. ENSURE CONNECTIONS ARE PROPERLY TIGHTENED AND NO BARE WIRE IS VISIBLE.**



- 5 BEFORE FINISHING INSTALL, REFER TO INSTRUCTIONS OVERLEAF FOR CHANGING THE DEFAULT DIMMING MODE AS PER LOAD REQUIREMENT. EVEN COMPATIBLE LOADS MAY REQUIRE ADJUSTMENT OF DIMMING MODE + MINIMUM AND MAXIMUM DIMMING LEVELS TO PERFORM OPTIMALLY.**



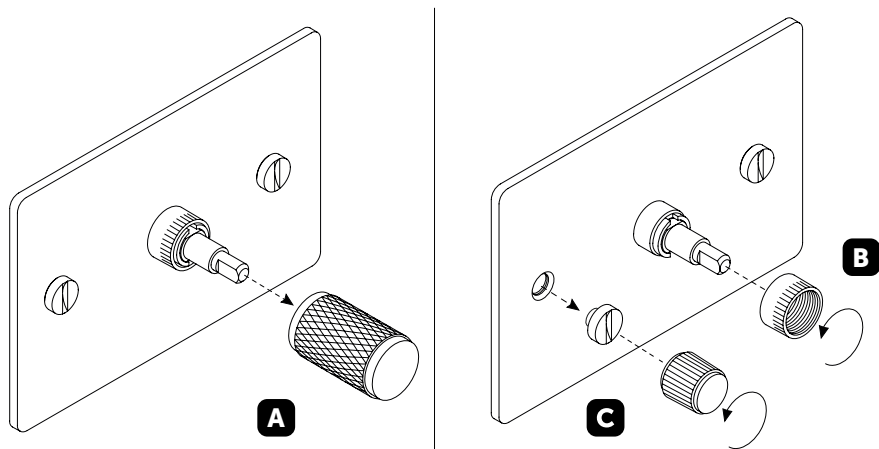
- 6 USE A SCREWDRIVER TO FIX THE UNIT ONTO THE BACKBOX VIA THE SUPPLIED MOUNTING SCREWS (C). ASSEMBLE THE ISOLATOR PLUGS TO THE COIN CAPS (B) AND FASTEN USING THE TOOL PROVIDED.**



7 OPTIONAL: BLING YOUR SOCKET

REQUIRES DIMMER DETAIL KIT.

- A. Remove the dimmer knob by pulling firmly from the plate.
- B. Remove the dimmer nut by turning anticlockwise. When both the dimmer knob and dimmer nut are removed, replace them with the corresponding components from the dimmer details kit.
- C. Finally remove and replace the coin cap screws with the plastic tool supplied.



8 ONCE INSTALLATION IS COMPLETE, RECONNECT THE MAINS POWER SUPPLY AT THE CIRCUIT BREAKER.



[end. **ORDINARY**]