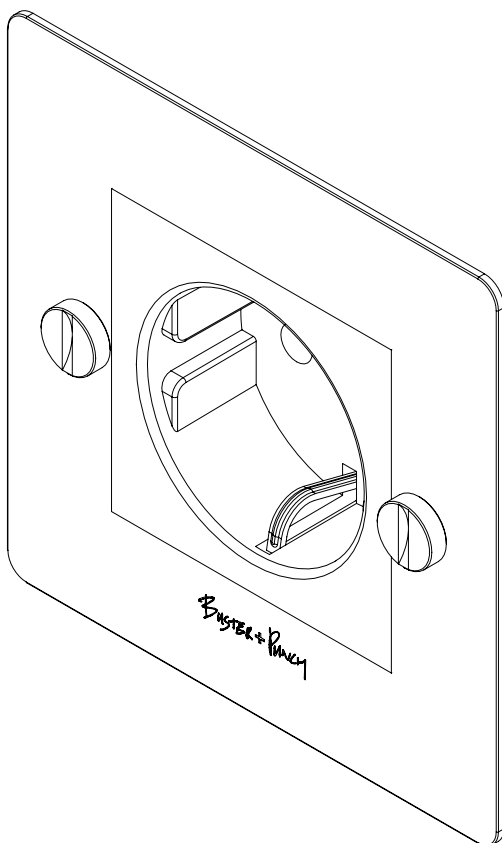




**ELECTRICITY**  
**EURO PLATE MODULE INSERT**

SKUE HDMI\*, USB\*\*\*\*, SCHS\*, FO, 5AS\*, UKS\*, BT\*\*\*,  
RJ45C6\*, SAT\*, TVF\*, MG30\*

**INSTALLATION MANUAL**



**BUSTERANDPUNCH.COM**

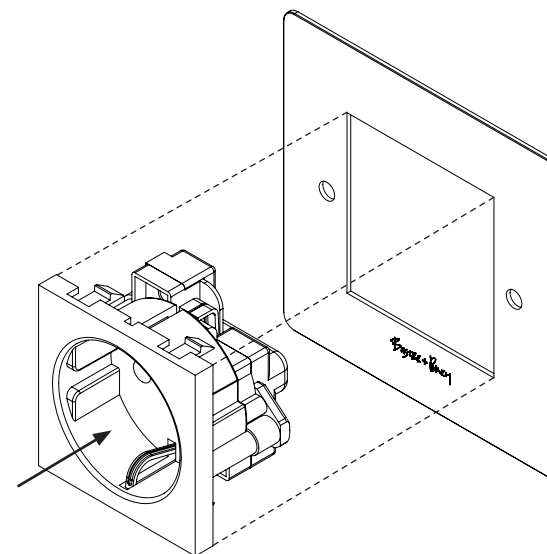
**1**



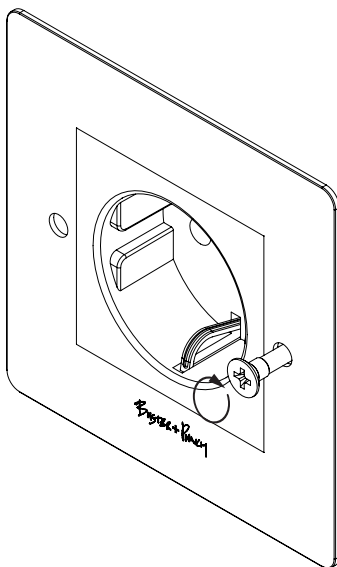
**BEFORE COMMENCING WORK, ISOLATE THE MAINS  
POWER SUPPLY AT CIRCUIT BREAKER.**



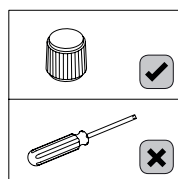
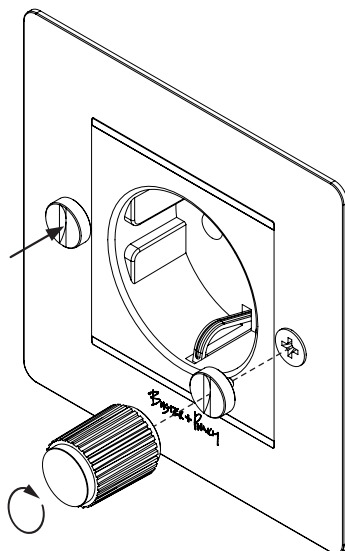
**2** **FIT MODULE ON TOP PLATE BY PUSHING IT INTO CUTOUT, CLICKING IT INTO PLACE.**



- 3** ONCE MODULE IS SECURELY IN PLACE – USE A CROSS HEAD ELECTRIC OR MANUAL SCREWDRIVER TO FIT THE COUNTERSUNK SCREWS UNTIL TIGHT\*.



- 4** BY HAND, SCREW THE COIN CAPS INTO THE END OF THE SCREWS. USE THE PLASTIC COIN CAP TOOL TO FULLY TIGHTEN THE COIN CAPS\*\*.



- 5** RESTORE POWER AFTER TESTING CONNECTIONS APPROPRIATELY WITH LOCAL GUIDANCE AND WIRING REGULATIONS.



[end. **ORDINARY** ]